



Wasp

TO OUR CUSTOMER:

Thank you for purchasing an EverRide Wasp Walk Behind Mower. We believe that you have exercised excellent judgment in your selection. The Wasp has been designed to give you many years of satisfactory service. Successful operation and long life depends on proper maintenance and correct operating techniques.

Before you received your unit, the dealer has performed a pre-delivery inspection. The dealer will discuss with you the features, operation and maintenance requirements. Your dealer will always be there to help you any time you need assistance or need equipment related to the use of your EverRide mower.

We recommend that you carefully read this entire manual before operating the unit. This operator's manual has been printed to provide you with safe operating techniques, proper maintenance procedures, correct assembly, and parts identification on your EverRide Walk Behind Mower. Keep this manual handy for future reference.

Should any assistance be needed in understanding any section of this manual, contact your EverRide products dealer.

EverRide reserves the right to make changes or add improvements to its products without incurring any obligation to make such changes to products manufactured previously. EverRide, or its dealers, accept no responsibility for variations which may be evident in the actual specifications of its products and the statements and descriptions contained in the publication.



OWNER'S WARRANTY INFORMATION

This warranty applies to the original retail purchaser of the EverRide products only. The warranty period starts upon the date of the original purchase reflected on the sales invoice.

As a condition to this warranty, the owner/operator shall have read, understood and followed the operator's manual guidelines for operations and maintenance supplied with this product, and that the product registration shall have been mailed to EverRide. Any lack of good maintenance, such as maintaining proper belt tension, tire pressures and lubrication shall be reason for rejection of a warranty claim.

In the judgment of EverRide, any original part found to be defective in material, workmanship or performance, will be repaired or replaced with a new part only by an EverRide Authorized Servicing Dealer without charge for parts and labor based on the following terms and conditions:

Warranty Coverage:

This warranty is limited to two years from the date of purchase for parts and one year for labor for any EverRide product used for commercial purposes, income producing purposes or residential use. EverRide products used for rental purposes are limited to 90 days of warranty. Engine and battery warranties are provided separately by the manufacturer of those components.

Belts, cutting blades, grass collection bags and tires are guaranteed to be free from manufacturer's defects for the first 90 days.

The mower deck shell will be warranted from cracking as a result of defects in material or workmanship for the life of the unit.

Service parts are warranted for 90 days from the date of purchase.

What this warranty does not cover:

The expense incurred for delivering this product to the dealer and returning it after repair. The responsibility of EverRide and its servicing dealers is limited to making the required repairs. Further, no breach of warranty shall be cause for cancellation of the contract of sale.

Subsequent purchasers of the mower other than the original purchaser. This warranty is not transferable.

Product(s) that has (have) been subject to improper maintenance, neglect, misuse, accident, alteration, modified or operated in any way contrary to the instructions specified in the Operator's Manual. Repairs made by unauthorized persons will not be covered under warranty. Damages caused by use of EverRide equipment other than for what it was designed.

Damages that are caused by unauthorized attachments, alterations or modifications will not be covered under warranty. Any piece of equipment where the serial number has been removed or is made illegible will not be covered under warranty.

Wear or maintenance items (unless defective) including, but not limited to: Clutch and brake linings, light bulbs, grass bags, filters (air, fuel, oil), lubricants & coolants (unless used during an authorized repair), spark plugs, injector nozzles.

As the manufacturer of this product, EverRide reserves the right to change, modify or improve the design of any of its products without assuming any obligation to modify or upgrade any mower, previously sold or manufactured.

As stated above, all other implied warranties are limited in duration. Any such implied warranties including merchantability, fitness for a particular purpose, or otherwise, are disclaimed in their entirety after the expiration of the warranty period. EverRide's obligation to the original owner is strictly and exclusively limited to the repair or replacement of defective parts, and EverRide does not assume nor authorize anyone to assume for them any other obligation.

EverRide assumes no responsibility for incidental, consequential or other damages including, but not limited to: Transportation of the mower to an Authorized Dealer and returning it back, rental of truck or trailer for transportation, expense for gasoline, injury to property, mechanic's travel time and mileage to perform repair(s), rental of a like product, loss of use of the EverRide product, loss of savings or revenue, loss or damage to personal property, and/or telephone charges.

Exclusions or limitations as stated above may not be allowed in some states. This warranty allows you specific legal rights and you may have other rights in your state.

Warranty Registration

The warranty registration form must be completed and signed by the authorized dealer and the original purchaser and returned to EverRide within ten days of the date of purchase. The date of purchase is considered the day the unit is delivered.

Dealer or Distributor Warranties

The selling dealer and distributor makes no warranty of their own and neither the dealer nor the distributor has any authority to make any representation or promise on behalf of EverRide, or to modify the terms or limitations of this warranty in any way.

**EverRide Wasp
Operator's & Parts Manual
CONTENTS**

| | |
|-------------------------------------|-----------|
| SAFETY..... | 2 |
| INTRODUCTION..... | 3 |
| IDENTIFICATION..... | 4 |
| MODEL/SERIAL NUMBERS..... | 4 |
| SPECIFICATIONS..... | 5 |
| ASSEMBLY INSTRUCTIONS..... | 5 |
| FINAL CHECK/ADJUSTMENT..... | 6 |
| BEFORE OPERATING..... | 7 |
| HEIGHT ADJUSTMENT..... | 8 |
| LUBRICATION/MAINTENANCE..... | 8 |
| LUBRICATION..... | 8 |
| MAINTENANCE..... | 9 |
| SAFETY DECALS..... | 10 |
| WIRING SCHEMATIC..... | 11 |
| TORQUE CHART..... | 12 |
| PARTS PAGES..... | 14 |
| 32" FRONT DECK ASSEMBLY..... | 14 |
| 36" FRONT DECK ASSEMBLY..... | 18 |
| 48" FRONT DECK ASSEMBLY..... | 22 |
| REAR DECK ASSEMBLY..... | 26 |
| HANDLE ASSEMBLY..... | 28 |
| CASTER ASSEMBLY..... | 36 |
| DECALS..... | 38 |

2 - IDENTIFICATION

Your mower is only as safe as the operator! Operator carelessness or error may result in serious bodily injury. Improper maintenance of the machine may also result in injury. Please read and follow these instructions on Safe Operation and be certain that anyone using this mower fully understands and follows these instructions.

1. Familiarize yourself with the controls and know how to stop this mower.



WARNING:

DO NOT allow children to operate the machine. **DO NOT** allow any adult to operate the machine without proper instruction.

2. Inspect your work area carefully. Remove debris from the area to be cut. Keep all bystanders away from the mowing area.
3. Avoid contact with moving parts. Keep hands and feet clear of the mower deck and all moving parts.
4. Never direct the discharge of material toward bystanders nor allow anyone near the machine while in operation.
5. Never tamper with safety devices or guards. If a guard or safety device is damaged or removed, replace it before operating the mower.
6. Handle gasoline carefully: use an approved gasoline container; fill the fuel tank to within 1" from the neck with good quality leaded or unleaded gasoline. Operator must wear proper shoes and clothing, which may also include safety glasses and ear protection.
7. Mow only during daylight hours or under very good artificial light.
8. Do NOT mow in slippery conditions, keep a firm grip on the handle bars, NEVER RUN.



DANGER:

Never add fuel to the tank while the engine is running or hot. ALWAYS WAIT at least five minutes before refueling and REFUEL WITH THE ENGINE OFF. KEEP FUEL AWAY FROM SPARKS OR FLAMES. WIPE AWAY any fuel spillage BEFORE starting unit. Never fill the fuel tank indoors. Wipe up any spilled gasoline. **Gasoline is highly flammable - NO SMOKING.**

9. The safety shield over the grass discharge must always be bolted in place and in the down position unless the grass catcher back plate is completely installed.
10. Do NOT leave the operator position unless the engine has been killed and blades have stopped.
11. If a solid object has been hit by the blades, stop the machine and check for damage. Repair or replace damaged/broken part(s) prior to restarting the engine.
12. Do NOT allow anyone to stand or walk on the grass discharge side of the mower when the mower is in operation.
13. Do NOT mow close to drop-offs, deep ditches or other hazards. Mow hillsides very carefully by mowing across the face of slopes, not up or down. Do NOT mow on steep slopes.
14. To avoid burns, DO NOT TOUCH the engine or muffler immediately after operation.

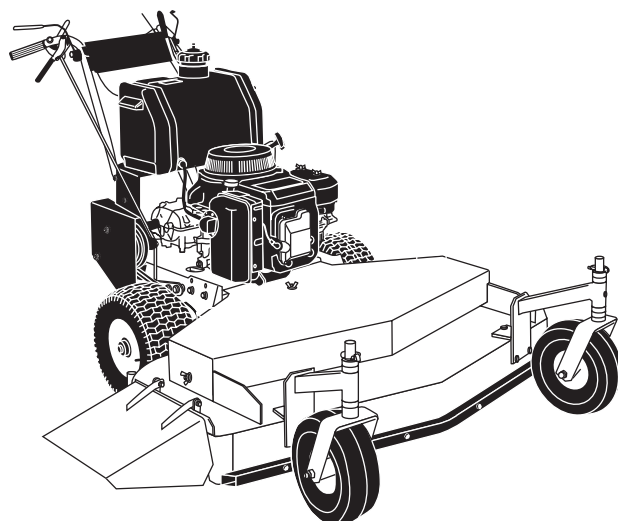
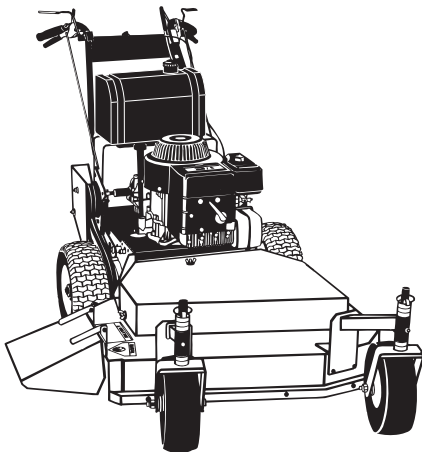
INTRODUCTION

The information in this publication describes the operation, maintenance and servicing of the EverRide Wasp mowers. Every effort has been made to provide correct and concise information to you, the operator, as available at date of book publication. Your EverRide dealer is available should items in this book or details of your machine not be understood.

This book is supplied with each machine to familiarize the operator with proper instructions needed for operation and maintenance. Studying and adhering to these instructions will insure optimum machine performance and longevity. A machine that is maintained properly and operated in the intended manner will provide greater dividends than one that is neglected and/or operated in manner other than as intended. Design and servicing of this machine has been kept as simple as possible to permit maintenance operations to be carried out with tools normally available.

This book should be thoroughly read and understood prior to operation of this machine. Inexperienced operators should study the contents of this publication and receive instruction from an experienced operator when possible. Your EverRide dealer can also assist in areas concerning machine operation and provide details concerning safe operation. It is suggested that this booklet be kept readily accessible, preferably with the machine, for future reference if questions or concerns arise. If the original book should become damaged, consult your Dealer in regards to acquiring a replacement.

Customers are strongly advised to use an official EverRide dealer in connection with any service problems and adjustments that may occur. The EverRide dealer network is specially trained and equipped for all service work and to advise customers on specific applications of the mower in local conditions.



4 - IDENTIFICATION

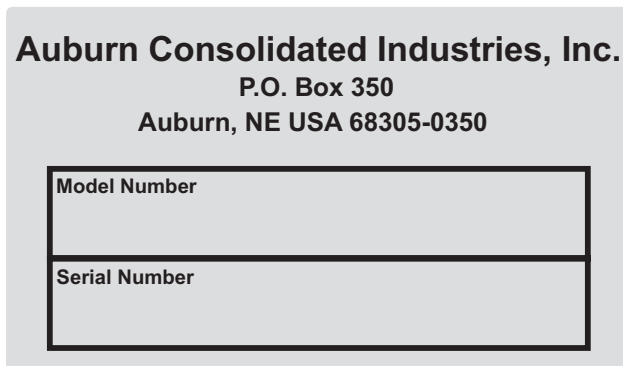
IDENTIFICATION

Model / Serial Numbers

Each EverRide Wasp mower is identified by means of model and serial numbers. As a further identification, the engine is also provided with identification numbers.

To insure prompt, efficient service when ordering parts or requesting repairs from an authorized EverRide dealer, these numbers must be provided.

This is what the mower serial number plate looks like.



The mower serial number plate is located below the operator's seat on the right hand side of vertical floor panel. Information contained in this serial tag is the model number and the serial number.

ENGINE MODEL NUMBER

ENGINE SERIAL NUMBER

The engine model number is found on a decal on the left side of the engine block on the oil reservoir next to the electric starter. The engine serial number is located at the bottom of the same decal.

NOTE: Reference to left-hand and right-hand, used throughout this manual, refers to the position when standing behind the unit.

Engine troubleshooting, repair or adjustments are not covered in this manual. A service manual for the engine can be ordered from a Kawasaki dealer.

SPECIFICATIONS
Belt Tension Guide
Deflection Measured With 12 lbs. of Force

| Belt | Inch Deflection | How to Adjust |
|------------------------|---------------------------------|-----------------------|
| Engine to Deck | 1/2" | Turnbuckle at Idler |
| Transmission Belt | 1/2" | Sliding Idler |
| Right Blade Drive Belt | 1/2" (48",52", And 60" only) | Threaded Rod to Idler |
| Wheel Drive | 1/2" | Self-Adjusting |

Assembly Instructions

1. Remove inner parts box and handle from crate. Remove outside frame work so that the mower is setting on the pallet.
2. On a 36" mower, use 3 – 5/16" X 1 3/4" bolts and 3 – 5/16" whizlocks and bolt the bumper into place. (On the 48" there are 4 - bumper bolts required.)The whizlocks should go to the inside of the deck. When assembling a 48" mower, make sure that the bumper is flush with the deck on both ends of the bumper.
3. Using 6 – 3/8" X 1" bolts (3 – used for each caster) and 6 – 3/8" whizlock nuts, bolt the casters into place. Position whizlock nuts to the inside of the deck.
4. Using 2 – 5/16" X 1" bolts with 2 – 5/16" flat washers and 2 – 15/16" nyloc nuts, take the shifter lever with grip and bolt onto the top side of the shifter bracket on the transmission. Place the 5/16" flat washers on the slotted hole side of the shifter bracket under the 5/16" nut. Position the shift lever so that it slides freely along the top side of the shifter plate but still hits the stop for reverse.
5. Mount the gas tank using the 2 – nylon hold down straps, pulling tension on the buckles until secure. Attach the quick coupler, on the end of the fuel line, to the bottom of the tank. (See Fig. 1)

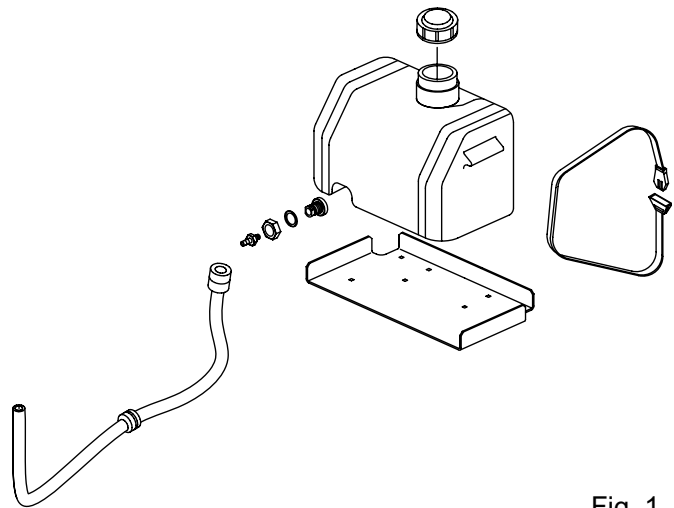


Fig. 1

6. Using the remaining 4 - 3/8" X 1" bolts and the 4 – 3/8" nyloc nuts, bolt the upper handle into position. (Remember that there are 3 – height settings for the handle for operator comfort.) Route the wiring harness along the handle, plugging it into the blade control switch, using the screws to attach the harness to the Operator Presence Control switch. There is not a specific color for hooking up the harness.

Assembly Instructions

- Using drive rods provided, turn them into the 5/16" swivel located in the left and right hand idler engagement bracket. Adjust the rods so that there is approximately 1/4" to 3/8" between the rod and the bottom of the thumb latch. Rods should be locked in place by using 4 – hair pin cotters and by placing a 5/16" flat washer to be inside of the drive handle between the drive lever and hair pin cotter. (See fig. 2)
- With the thumb latches locked in the neutral position, adjust the brake swivel until you feel a slight resistance when hooking it back to the idler assembly. Remember with thumb locks in the neutral position, you should be able to free wheel the machine. When the thumb locks are rotated all the way to the lock position, the brake should lock the wheel. At this time, you may also hook up the blade engagement rod, adjusting the length of the rod so the bell crank will not bottom out in the slot.

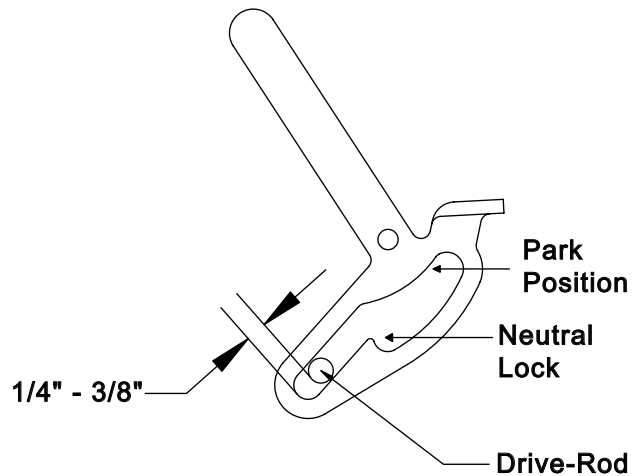


Fig. 2

- At this point, oil and fuel engine. Make sure that the air pressures in the rear tires are equal at (12 psi). Adjust the front tire pressures to (20 psi). Your mower is now ready for use.

Final Check / Adjustment

- Adjust the brake control rod to obtain "free wheeling" with the drive levers in the neutral position and positive braking when the drive levers are squeezed close to the handle grips. Shorten the effective length of the brake rod to increase braking.
- Check air pressure in drive wheels (12 psi) and caster wheels (20 psi). This is critical for appropriate mower tracking.
- Check for proper belt tension (see belt tension guide).
- Keep a 1/8" to 1/4" clearance between belt guides and belts. Be sure the drive control rod is properly adjusted in the thumb latch. (See Fig 2.)
- After a 10 hour "Break-In" period go through steps 1 thru 3.
- Proper adjustments must be maintained to insure safe, trouble free, long life operation of the mower. After completing the foregoing instructions and recommended procedures you are ready to put the mower into operation.



CAUTION:

Excessive belt tension may cause damage!!

Before Operating

- Know your machine top to bottom.
 - Make certain all safety standards and instructions have been fully read and understood.
 - Be acquainted with all “SAFETY INSTRUCTIONS” in this manual – to start.
1. Fill the fuel tank and open the fuel valve.
 2. Shift the transmission to neutral.
 3. Blades engagement lever must be in the “Off” position or back.
 4. Thumb latches need to be in the “Neutral Lock” position.
 5. Choke the engine as required and start.
 6. After engine is running, push blade engagement lever forward to engage blades.
 7. Shift the transmission to the desired gear (1 thru 4) for mowing, 5th gear is for transport only.
 8. Squeeze the control levers and push forward on the thumb latches to unlock the levers. Slowly release control levers to engage the drive wheels.
 9. In a normal mode the mower will travel in a straight line. To turn; squeeze the drive lever on the side in which you want to turn.
 10. To STOP forward motion, squeeze both drive levers, lock thumb latches and shift the transmission to neutral.
 11. This unit is equipped with “Operator Presence Controls” on the upper handle. When the operator leaves the operator position removing both hands from the “Operator Presence Control” levers it will cause the engine to shutdown.

THIS FEATURE IS FOR YOUR SAFETY!



CAUTION:

Machine must be at a full “STOP” before shifting from forward to reverse or from reverse to forward. Failure to do so may result in personal injury and/or damage to the transmission.



WARNING:

FAILURE TO FOLLOW THE PREVIOUS INSTRUCTIONS MAY RESULT IN SEVERE BODILY INJURY OR MECHANICAL FAILURE.

HEIGHT ADJUSTMENT

REAR DECK MOUNT IN HIGHEST POSITION

REAR DECK MOUNT IN LOWEST POSITION

- (5) spacers on top of caster arm = 1 7/8" to 3 1/8"
- (4) spacers on top of caster arm = 2 1/8" to 3 3/8"
- (3) spacers on top of caster arm = 2 1/2" to 3 3/4"
- (2) spacers on top of caster arm = 2 5/8" to 3 7/8"
- (1) spacer on top of caster arm = 2 7/8" to 4 1/8"
- All spacers under caster arm = 3 1/4" to 1 1/2"

- (5) spacers on top of caster arm = 1 1/2" to 2 3/4"
- (4) spacers on top of caster arm = 1 3/4" to 3"
- (3) spacers on top of caster arm = 2" to 3 1/4"
- (2) spacers on top of caster arm = 2 3/8" to 3 3/8"
- (1) spacer on top of caster arm = 2 5/8" to 3 7/8"
- All spacers under caster arm = 2 7/8" to 4 1/8"

NOTE: Use 1/4" blade spacers to achieve cutting height between the above measurements.

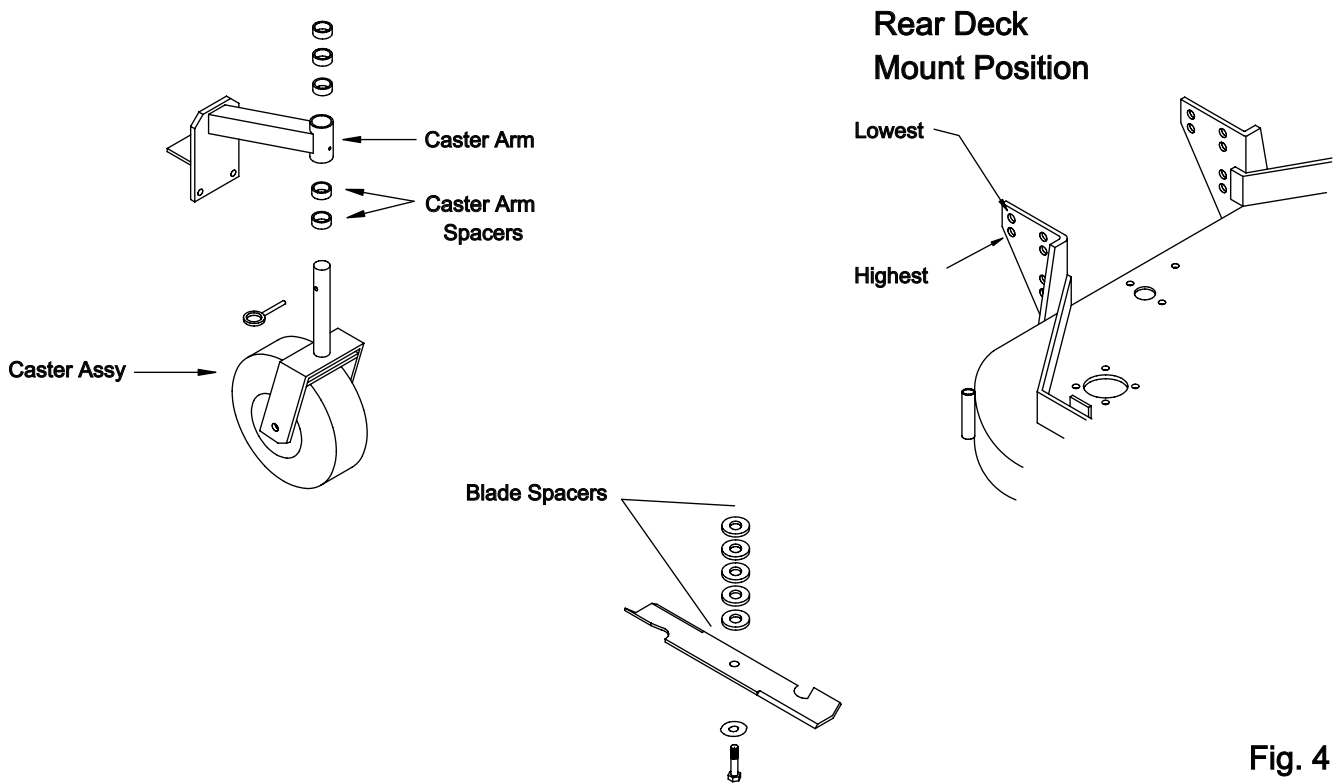


Fig. 4

LUBRICATION / MAINTENANCE

The following recommendations should be used to ensure proper and safe operation of the mower.

LUBRICATION

Grease Daily:

- Idler Arm
- Caster Wheels and Caster Pivots
- Drive Wheels

Grease Every 100 Hours:

- Bell Crank Pivot Bearing

LUBRICATION / MAINTENANCE

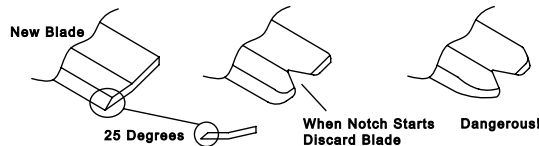
NOTE:

The Peerless Transmission is "LIFETIME LUBRICATED". If service is required, contact an authorized Peerless Dealer or Repair Center.

MAINTENANCE

1. Engine: For complete maintenance and operating information for your engine, please refer to your engine operating and maintenance manual provided by the engine manufacturer.
2. Belts: The drive and deck belts should be checked and adjusted after the first 10 hours of use and then every 50 hours from that point on.
3. Tires: Correct tire pressure is essential for efficient operation of the mower.
4. Check tire air pressure periodically. Inflate tires to the pressures listed:

| | | |
|---------------|---|--------|
| Drive Wheels | = | 12 psi |
| Caster Wheels | = | 20 psi |



5. Mower Blades: Check sharpness of mower blades after every 10 hours of operation. To sharpen blades proceed as follows:

- Block the front end of the mower up or run front end up on ramps
- Remove blade by turning bolt counter clockwise.
- Sharpen blade with a hand file, electric grinder or blade sharpener. Wear gloves and eye protection when sharpening. Grind blade at original bevel.
- Check balance of blade by positioning the blade on a nail or blade balance pedestal. Grind the blade on the end that is heavier until both sides balance.
- Reinstall blades.

CAUTION:

DO NOT ADJUST OR CHANGE ATTACHMENTS UNLESS SPARK PLUG WIRE HAS BEEN DISCONNECTED AND THE ENGINE HAS STOPPED.



SAFETY DECALS

⚠ CAUTION

1. READ INSTRUCTION MANUAL BEFORE OPERATING EQUIPMENT.
2. BE SURE THE OPERATING CONTROLS ARE LOCKED IN NEUTRAL BEFORE STARTING THE ENGINE.
3. MOWER SHALL NOT BE USED UNLESS ALL GUARDS ARE BOLTED IN PLACE.
4. KEEP FEET, HANDS, & ALL OBJECTS FROM UNDER DECK. KEEP PEOPLE AND PETS AT A SAFE DISTANCE.
5. USE CAUTION ON SLOPES.
6. BEFORE LEAVING OPERATOR'S POSITION:
 - A. LOCK DRIVE LEVERS IN NEUTRAL WITH LATCHES.
 - B. DISENGAGE ATTACHMENT CLUTCH.
 - C. SHUT OFF ENGINE.
7. WHEN ADJUSTING WHEELS BE SURE ENGINE IS OFF.
8. DISCONNECT SPARK PLUG WIRE BEFORE SERVICING OR CLEANING.
9. DO NOT ADD FUEL WHILE ENGINE IS WARM OR RUNNING.

363038

E363038

⚠ DANGER  

TO AVOID SERIOUS INJURY FROM THROWN OBJECTS OR BLADE CONTACT
DO NOT STAND NEAR MACHINE
WHEN IN OPERATION
DO NOT OPERATE MOWER WITHOUT
GRASS DEFLECTOR OR GUARD IN PLACE

160173

160173

DANGER

KEEP HANDS and FEET AWAY



E363023

OPERATOR MUST DISENGAGE CLUTCH BEFORE SHIFTING GEARS

E363233

⚠ WARNING

- **Shield Missing.**
- **DO NOT Operate.**

160169

⚠ CAUTION

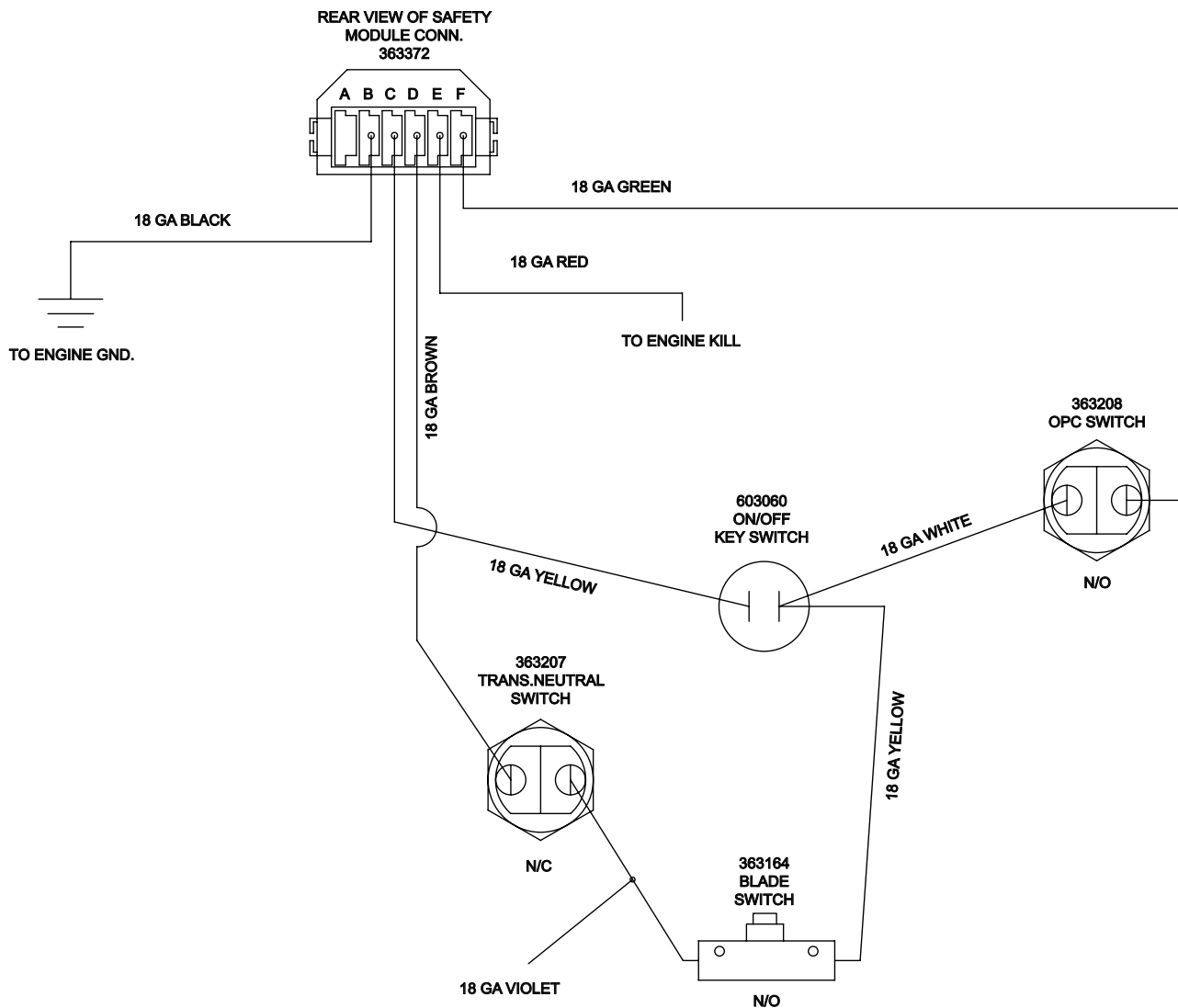
Allow engine to cool for 2 minutes before refueling.

To prevent fuel spill, fill tank to 1-1/2 inches below filler neck.

In USA - use unleaded gasoline only.

E363364

PART #: E363371
WIRE HARNESS FOR WKW1332; 13 HP KAWASAKI
WIRE HARNESS FOR WKW1536; 15 HP KAWASAKI
WIRE HARNESS FOR WKW1548; 15 HP KAWASAKI



12 - BOLT TORQUE CHART

FASTENER TORQUES

Mounting bolts and fasteners may tend to work loose during operation due to vibration or stress. A visual check of the complete mower should be made daily. All fasteners should be checked for correct retention torque, weekly, and more often if the unit is being operated in rough areas.

All locally procured fastening hardware should be Grade 5 or equivalent. Use the following chart for general torque specifications for Grade 5 standard fasteners. Special fastener torques for the mower are shown separately below.

| Bolt Size | ft. lb. | N•m |
|-----------|---------|---------|
| 1/4-20 | 7-9 | 9-12 |
| 5/16-18 | 10-15 | 15-20 |
| 3/8-16 | 20-25 | 25-35 |
| 7/16-14 | 30-40 | 40-55 |
| 1/2-13 | 50-60 | 70-90 |
| M8 | 17-20 | 23-27 |
| M10 | 34-40 | 45-55 |
| M12 | 55-65 | 75-90 |
| M14 | 91-109 | 125-145 |
| M16 | 145-166 | 196-225 |

NOTE: All torque specifications apply to plated or oiled fasteners. When non-plated or dry fasteners are used, increase specified torque values by 20%.

IMPORTANT:

Torque values SHOULD NOT be followed when fastening plastic parts!

SPECIAL FASTENER TORQUES

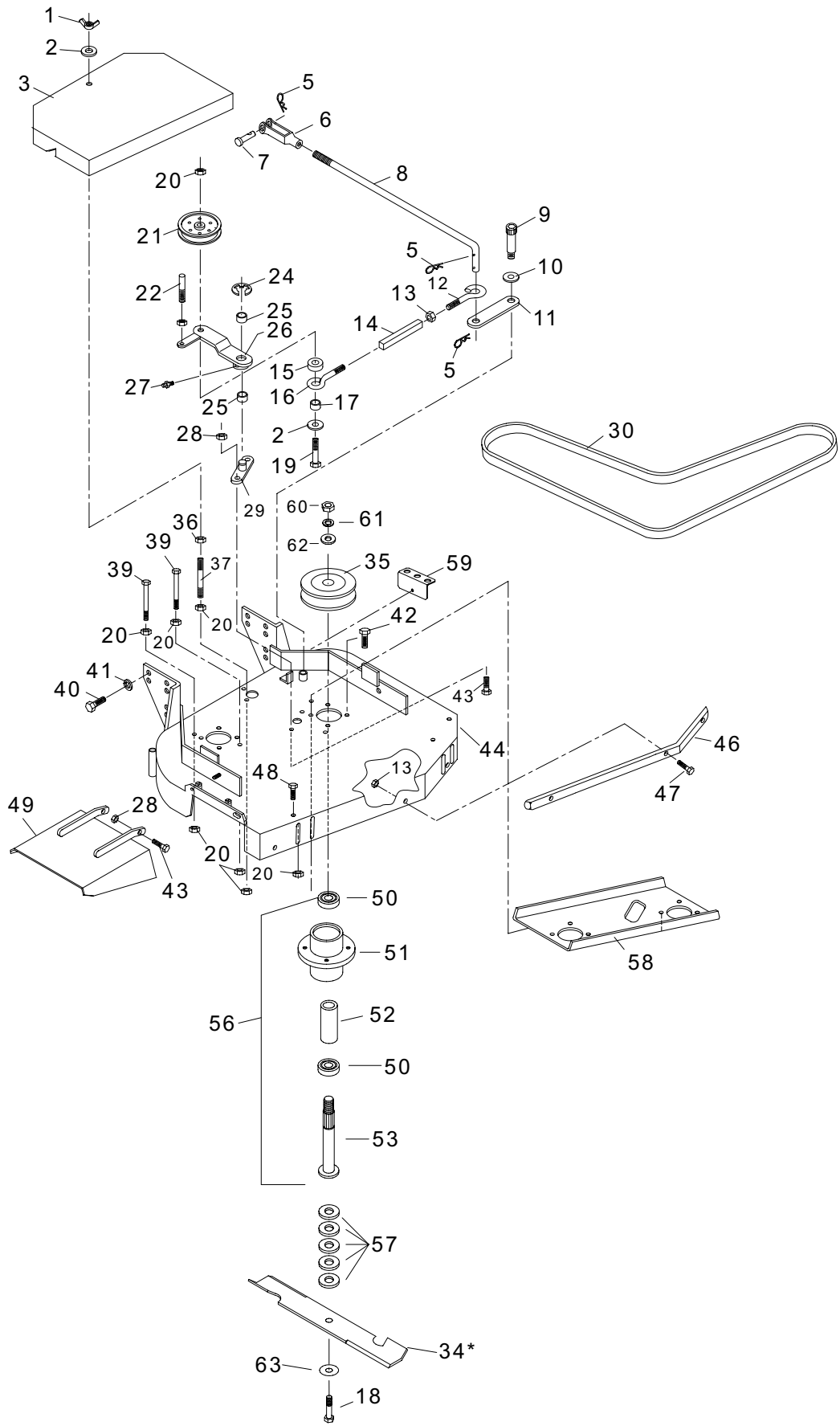
IMPORTANT:

DO NOT use the pulley nut to hold the shaft from turning during blade tightening, as the pulley nut will be over torqued which could cause spindle spacer and bearing damage.

Mowing Blade Retaining Bolt - (5/8-11 x 1-1/2) 60 ft. lbs. (81 N•m)

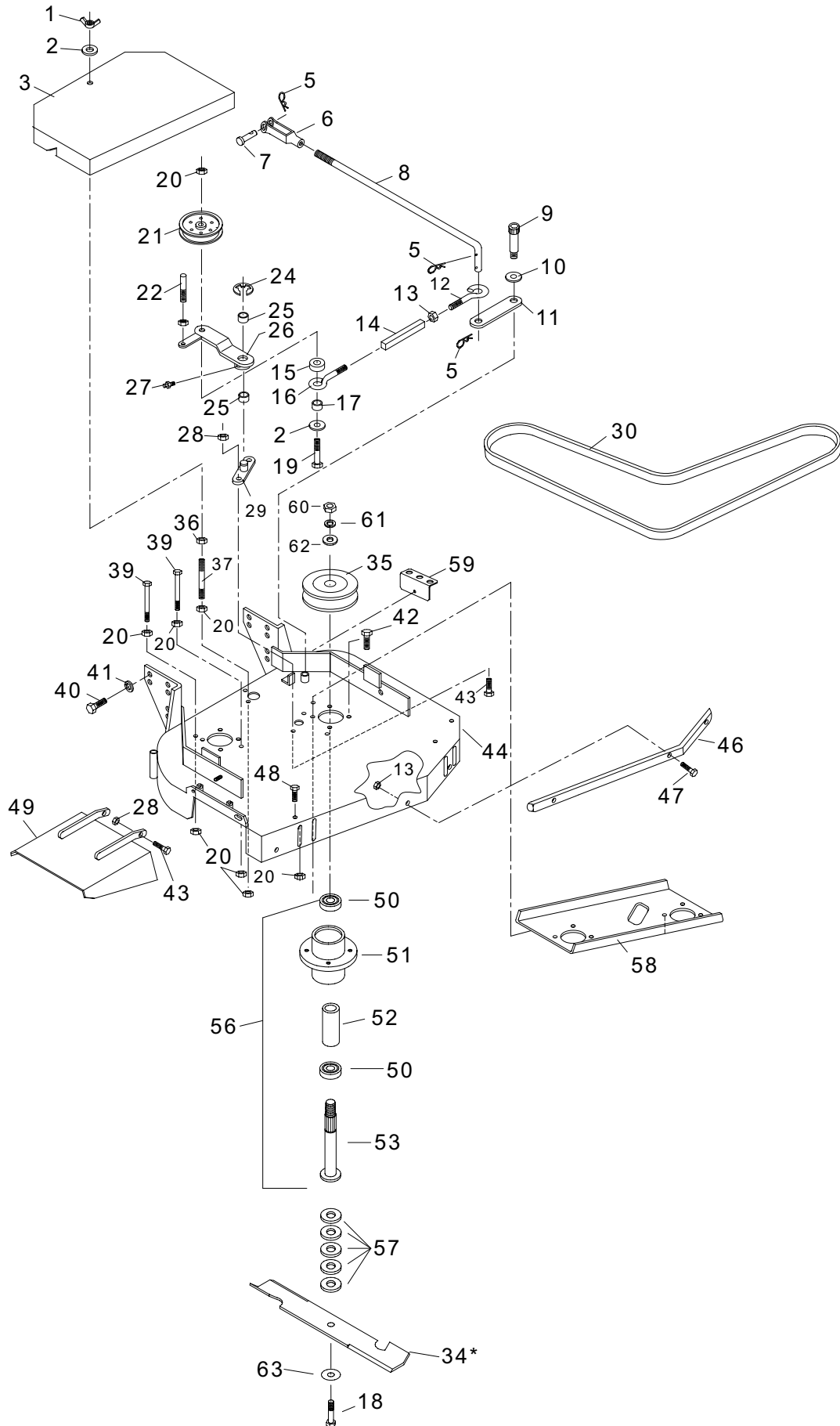
Spindle Pulley Retaining Nut (3/4-16 HEX) 90 ft. lbs. (122 N•m)

14 - 32" Front Deck Assembly



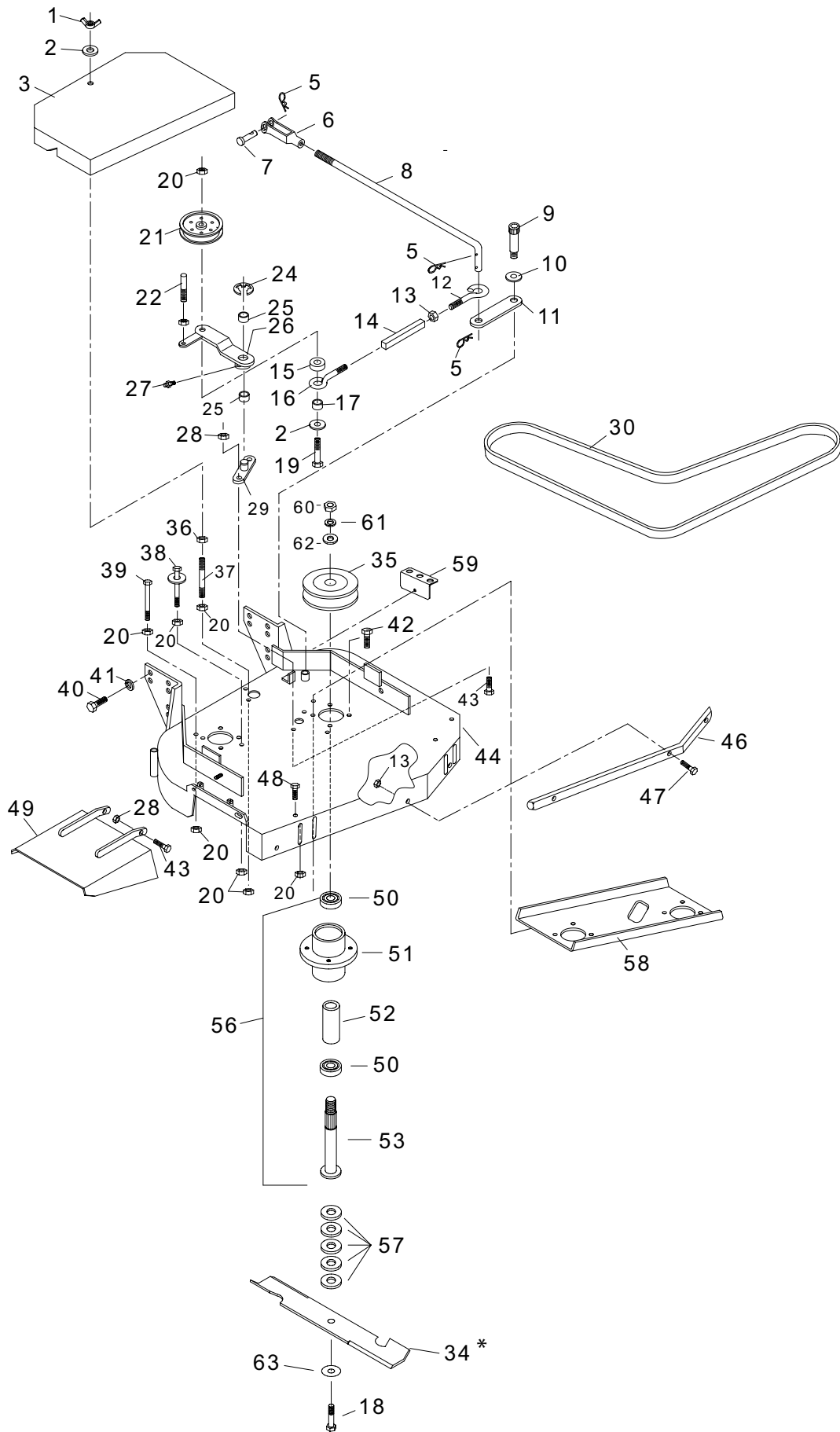
| ITEM | PART NO. | QTY | DESCRIPTION |
|------|----------|-----|-----------------------------|
| 1 | E103027 | 3 | 3/8" WING NUT |
| 2 | 960702 | 4 | 3/8" STD. FLAT WASHER |
| 3 | 170131 | 1 | ASSY, SHIELD 32 W/DECAL S/O |
| 5 | E363165 | 3 | HAIRPIN COTTER |
| 6 | E363192 | 1 | LARGE YOKE |
| 7 | E363196 | 1 | CLEVIS PIN |
| 8 | E323002 | 1 | BLADE DRIVE LINKAGE |
| 9 | E109014 | 1 | SHOULDER BOLT |
| 10 | E363240 | 1 | SHOULDER SPACER |
| 11 | E363085 | 1 | CAM LINK |
| 12 | E363080 | 1 | RIGHT EYEBOLT |
| 13 | 964019 | 4 | 5/16" WHIZLOCK NUT |
| 14 | E363172 | 1 | TURNBUCKLE BODY |
| 15 | E363097 | 1 | TURNBUCKLE SPACER |
| 16 | E363082 | 1 | LEFT EYEBOLT |
| 17 | E363174 | 1 | EYEBOLT SPACER |
| 18A | 960155 | 2 | 5/8"-11 X 1 1/2" HEX BOLT |
| 18B | 960158 | 2 | 5/8"-11 X 2 1/4" HEX BOLT |
| 19 | 960052 | 1 | 3/8" X 2 1/2" BOLT |
| 20 | 964016 | 18 | 3/8" WHIZLOCK NUT |
| 21 | E363264 | 1 | ENGAGEMENT IDLER (WF) |
| 22 | E363249 | 1 | BELT SNUBBER |
| 24 | E108509 | 1 | "E" RING |
| 25 | E363089 | 2 | BRONZE BUSHING |
| 26 | E362071 | 1 | ENGAGEMENT ARM W/BUSHING |
| 27 | E111004 | 1 | 1/4" - 28 ZERK |
| 28 | 967115 | 14 | 5/16" NYLOC HEX NUT |
| 29 | E362024 | 1 | IDLER PIVOT ASSY. |
| 30 | E323003 | 1 | BLADE DRIVE BELT |
| 34 | E483035 | 2 | 16" BLADE |
| 35 | E363378 | 2 | RAISED PULLEY |
| 36 | 968087 | 1 | 3/8" NYLOC HEX NUT |
| 37 | E363090 | 2 | BELT SHIELD SUPPORT |
| 39 | 960062 | 4 | 3/8" X 5" HEX BOLT |
| 40 | 960079 | 6 | 7/16" 1" HEX BOLT |
| 41 | 960603 | 6 | 7/16" LOCK WASHER |
| 42 | 960024 | 8 | 5/16" X 1 1/4" HEX BOLT |

16 - 32" Front Deck Assembly



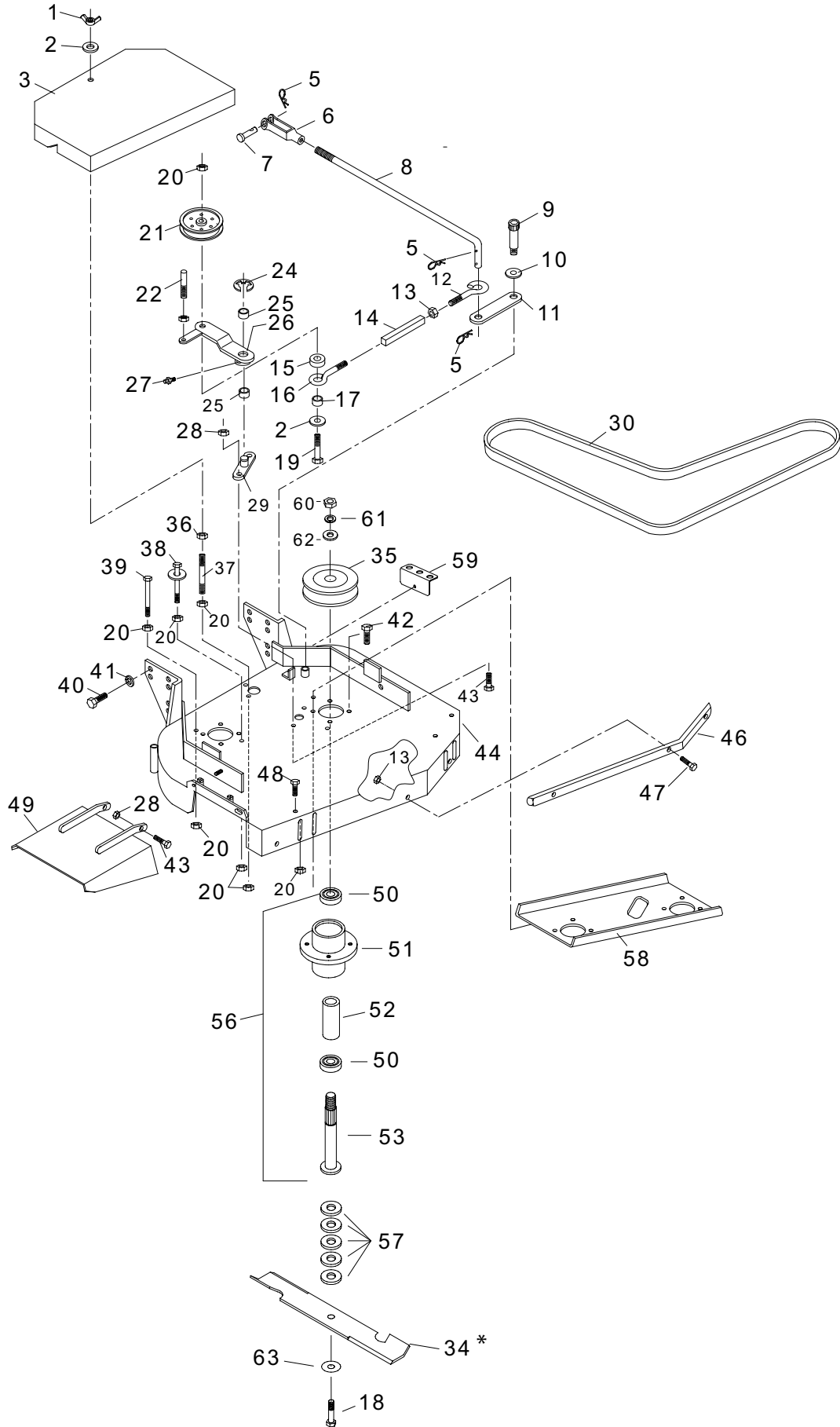
| ITEM | PART NO. | QTY | DESCRIPTION |
|------|----------|-----|------------------------------|
| 43 | 960023 | 8 | 5/16" X 1" HEX BOLT |
| 44 | 170120 | 1 | ASSY, DECK 32 W/DECALS S/O |
| 45 | E109014 | 1 | SHOULDER BOLT |
| 46 | E323029 | 1 | SQUARE BUMPER |
| 47 | 960026 | 3 | 5/16" X 1 3/4" HEX BOLT |
| 48 | 960046 | 6 | 3/8" X 1" HEX BOLT |
| 49 | 170122 | 1 | ASSY, DEF. 32/36 W/DECAL S/O |
| 50 | E363350 | 4 | SPINDLE BEARING |
| 51 | E363380 | 2 | BLADE SPINDLE HOUSING |
| 52 | E583113 | 2 | BEARING SPACER TUBE |
| 53 | E583112 | 2 | SPINDLE SHAFT |
| 56 | E363379 | 2 | SPINDLE ASSY COMPLETE |
| 57 | E363382 | 10 | BLADE SPACER |
| 58 | 170135 | 1 | ASSY, CHANNEL 32 W/DECAL S/O |
| 59 | E322019 | 1 | SPACER BRACKET |
| 60 | E104511 | 2 | 3/4"-16 HEX NUT |
| 61 | 960606 | 2 | 3/4" LOCK WASHER |
| 62 | E105269 | 2 | 3/4" S.A.E. FLAT WASHER |
| 63 | E583108 | 2 | 5/8" DISC SPRING WASHER |
| * | E491007 | 1 | KIT, OPTIONAL MULCH |

18 - 36" Front Deck Assembly



| ITEM # | PART NO. | QTY | DESCRIPTION |
|--------|----------|-----|-----------------------------|
| 1 | E103027 | 3 | 3/8" WING NUT |
| 2 | 960702 | 4 | 3/8" STD. FLAT WASHER |
| 3 | 170139 | 1 | ASSY, SHIELD 36 W/DECAL S/O |
| 5 | E363165 | 3 | HAIRPIN COTTER |
| 6 | E363192 | 1 | LARGE YOKE |
| 7 | E363196 | 1 | CLEVIS PIN |
| 8 | E363194 | 1 | BLADE DRIVE LINKAGE |
| 9 | E109014 | 1 | SHOULDER BOLT |
| 10 | E363240 | 1 | SHOULDER SPACER |
| 11 | E363085 | 1 | CAM LINK |
| 12 | E363080 | 1 | RIGHT EYEBOLT |
| 13 | 964019 | 4 | 5/16" WHIZLOCK NUT |
| 14 | E363172 | 1 | TURNBUCKLE BODY |
| 15 | E363097 | 1 | TURNBUCKLE SPACER |
| 16 | E363082 | 1 | LEFT EYEBOLT |
| 17 | E363174 | 1 | EYEBOLT SPACER |
| 18A | 960155 | 2 | 5/8"-11 X 1 1/2" HEX BOLT |
| 18B | 960158 | 2 | 5/8"-11 X 2 1/4" HEX BOLT |
| 19 | 960052 | 1 | 3/8" X 2 1/2" BOLT |
| 20 | 964016 | 18 | 3/8" WHIZLOCK NUT |
| 21 | E363264 | 1 | ENGAGEMENT IDLER (WF) |
| 22 | E363249 | 1 | BELT SNUBBER |
| 24 | E108509 | 1 | "E" RING |
| 25 | E363089 | 2 | BRONZE BUSHING |
| 26 | E362071 | 1 | ENGAGEMENT ARM W/BUSHING |
| 27 | E111004 | 1 | 1/4" - 28 ZERK |
| 28 | 967115 | 14 | 5/16" NYLOC HEX NUT |
| 29 | E362024 | 1 | IDLER PIVOT ASSY. |
| 30 | E363210 | 1 | BLADE DRIVE BELT |
| 34 | E363291 | 2 | 18" BLADE |
| 35 | E363378 | 2 | RAISED PULLEY |
| 36 | 968087 | 1 | 3/8" NYLOC HEX NUT |
| 37 | E363090 | 2 | BELT SHIELD SUPPORT |
| 38 | E362018 | 2 | FRONT BELT GUIDE |
| 39 | 960062 | 2 | 3/8" X 5" HEX BOLT |
| 40 | 960079 | 6 | 7/16" 1" HEX BOLT |

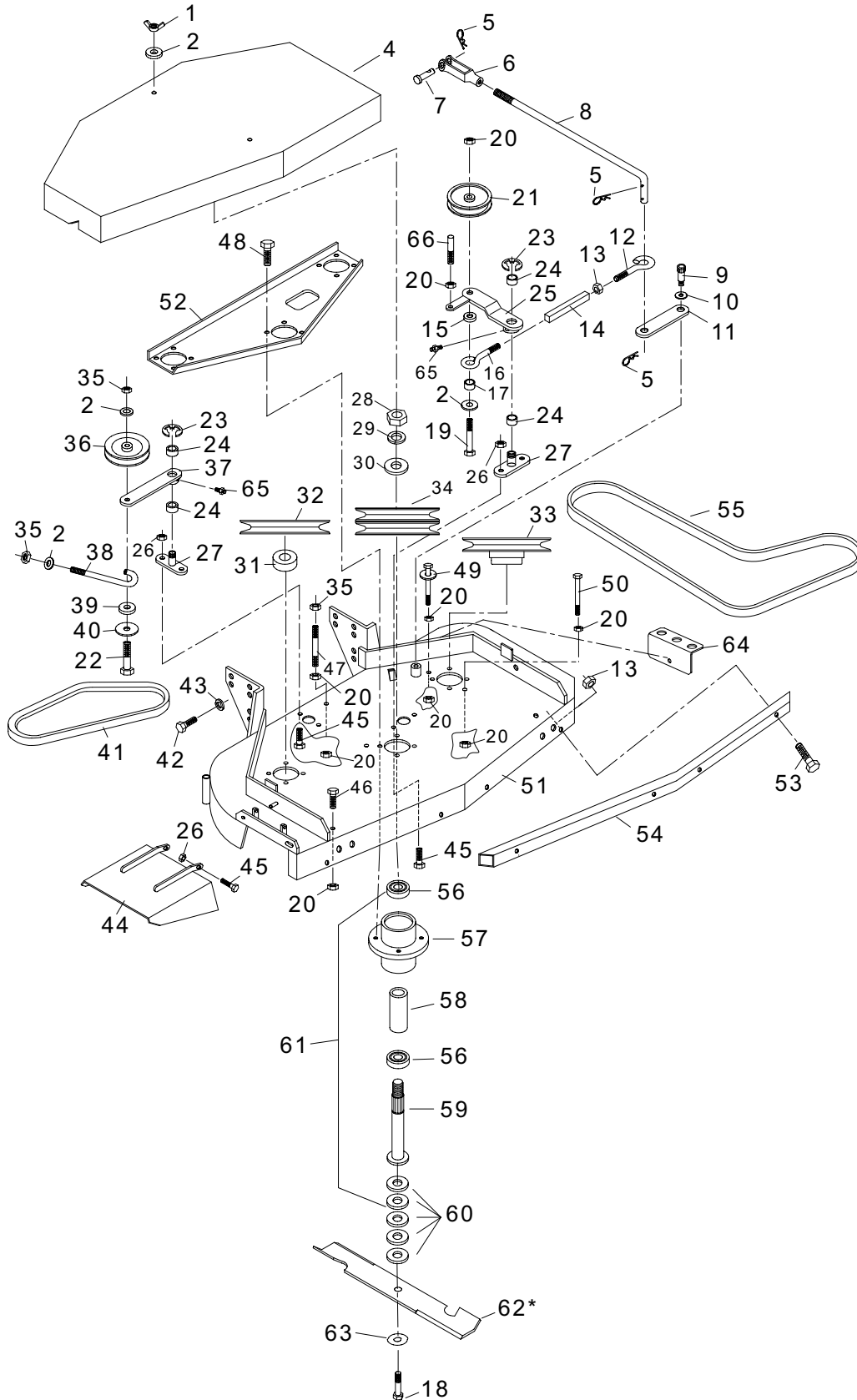
20 - 36" Front Deck Assembly



36" Front Deck Assembly - 21

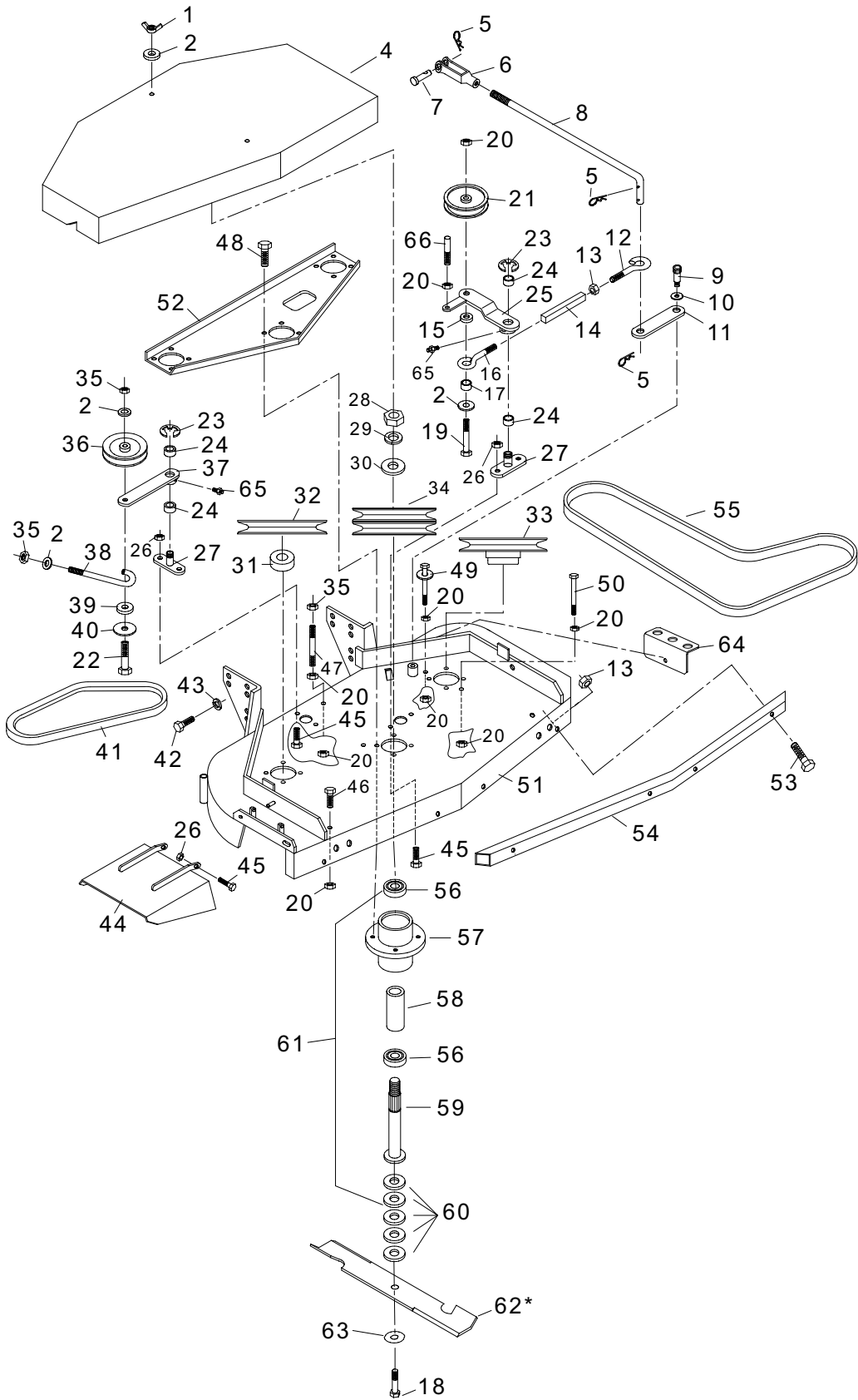
| ITEM # | PART NO. | QTY | DESCRIPTION |
|--------|----------|-----|------------------------------|
| 41 | 960603 | 6 | 7/16" LOCK WASHER |
| 42 | 960024 | 8 | 5/16" X 1 1/4" HEX BOLT |
| 43 | 960023 | 8 | 5/16" X 1" HEX BOLT |
| 44 | 170125 | 1 | ASSY, DECK 36 W/DECALS S/O |
| 45 | E109014 | 1 | SHOULDER BOLT |
| 46 | E363304 | 1 | SQUARE BUMPER |
| 47 | 960026 | 3 | 5/16" X 1 3/4" HEX BOLT |
| 48 | 960046 | 6 | 3/8" X 1" HEX BOLT |
| 49 | 170122 | 1 | ASSY, DEF. 32/36 W/DECAL S/O |
| 50 | E363350 | 4 | SPINDLE BEARING |
| 51 | E363380 | 2 | BLADE SPINDLE HOUSING |
| 52 | E583113 | 2 | BEARING SPACER TUBE |
| 53 | E583112 | 2 | SPINDLE SHAFT |
| 56 | E363379 | 2 | SPINDLE ASSY COMPLETE |
| 57 | E363382 | 10 | BLADE SPACER |
| 58 | 170141 | 1 | ASSY, CHANNEL 36 W/DECAL S/O |
| 59 | E322019 | 1 | SPACER BRACKET |
| 60 | E104511 | 2 | 3/4"-16 HEX NUT |
| 61 | 960606 | 2 | 3/4" LOCK WASHER |
| 62 | E105269 | 2 | 3/4" S.A.E. FLAT WASHER |
| 63 | E583108 | 2 | 5/8" DISC SPRING WASHER |
| * | E491008 | 1 | KIT, OPTIONAL MULCH |

22 - 48" Front Deck Assembly



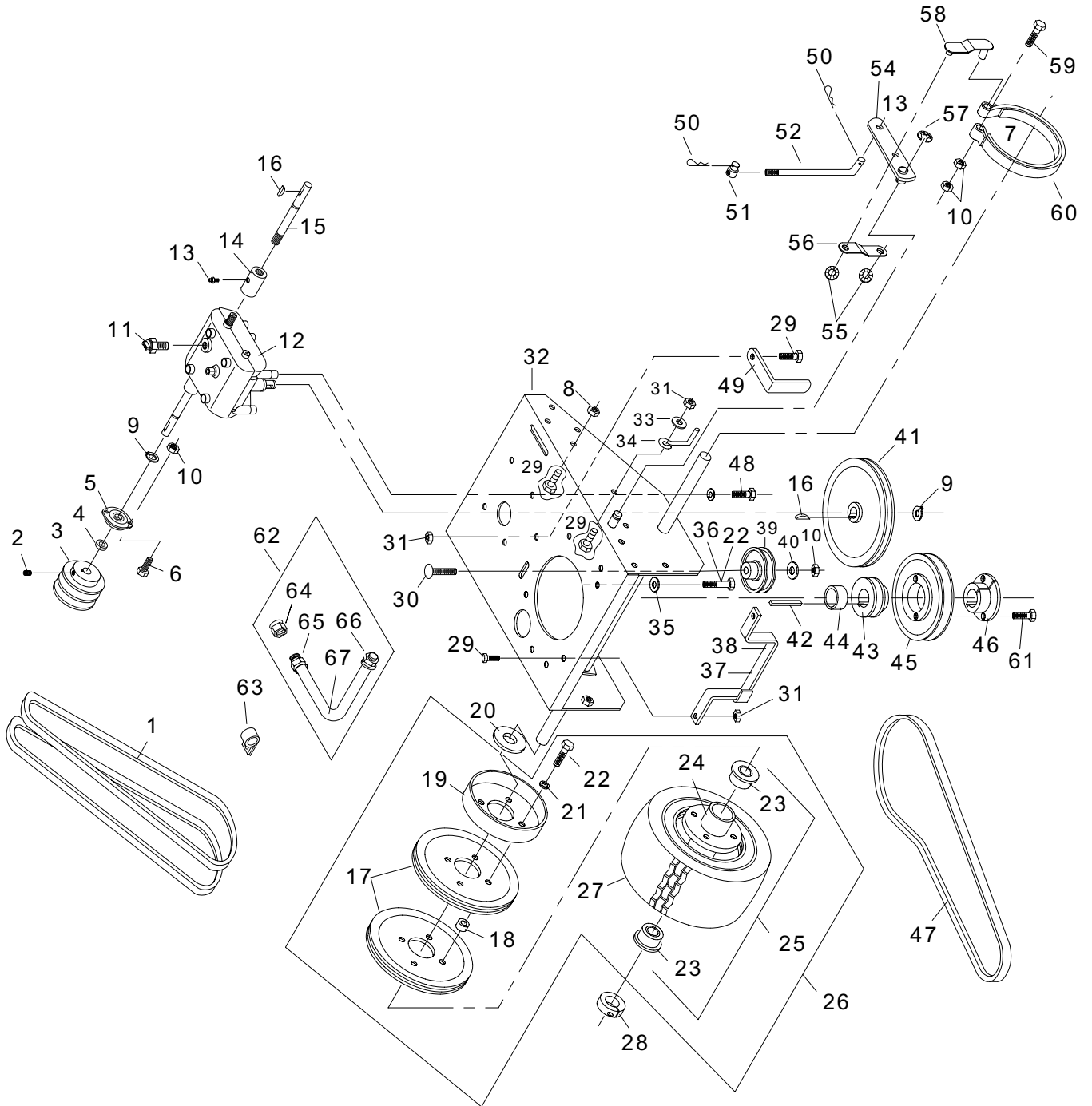
| ITEM # | PART NO. | QTY | DESCRIPTION |
|--------|----------|-----|-----------------------------|
| 1 | E103027 | 3 | 3/8" WING NUT |
| 2 | 960702 | 4 | 3/8" STD. FLAT WASHER |
| 3 | 170144 | 1 | ASSY, SHIELD 48 W/DECAL S/O |
| 5 | E363165 | 3 | HAIRPIN COTTER |
| 6 | E363192 | 1 | LARGE YOKE |
| 7 | E363196 | 1 | CLEVIS PIN |
| 8 | E483028 | 1 | BLADE DRIVE LINKAGE |
| 9 | E109014 | 1 | SHOULDER BOLT |
| 10 | E363240 | 1 | SHOULDER SPACER |
| 11 | E363085 | 1 | CAM LINK |
| 12 | E363080 | 1 | RIGHT EYEBOLT |
| 13 | 964019 | 4 | 5/16" WHIZLOCK NUT |
| 14 | E363172 | 1 | TURNBUCKLE BODY |
| 15 | E363097 | 1 | TURNBUCKLE SPACER |
| 16 | E363082 | 1 | LEFT EYEBOLT |
| 17 | E363174 | 1 | EYEBOLT SPACER |
| 18A | 960155 | 2 | 5/8"-11 X 1 1/2" HEX BOLT |
| 18B | 960158 | 2 | 5/8"-11 X 2 1/4" HEX BOLT |
| 19 | 960052 | 1 | 3/8" X 2 1/2" BOLT |
| 20 | 964016 | 18 | 3/8" WHIZLOCK NUT |
| 21 | E363264 | 1 | ENGAGEMENT IDLER (WF) |
| 22 | E100297 | 1 | 3/8" x 2 1/4" HEX BOLT |
| 23 | E108509 | 1 | "E" RING |
| 24 | E363089 | 4 | BRONZE BUSHING |
| 25 | E362071 | 1 | ENGAGEMENT ARM W/BUSHING |
| 26 | 967115 | 15 | 5/16" NYLOC HEX NUT |
| 27 | E362024 | 2 | IDLER PIVOT ASSY. |
| 28 | E104511 | 3 | 3/4"-16 HEX NUT |
| 29 | 960606 | 3 | 3/4" LOCK WASHER |
| 30 | E105269 | 3 | 3/4" S.A.E. FLAT WASHER |
| 31 | E583110 | 1 | PULLEY SPACER |
| 32 | E583107 | 1 | PULLEY |
| 33 | E363378 | 1 | RAISED PULLEY |
| 34 | E363377 | 1 | DOUBLE PULLEY |
| 35 | 968087 | 3 | 3/8" NYLOC HEX NUT |
| 36 | E483025 | 1 | RIGHT HAND IDLER PULLEY |
| 37 | E482005 | 1 | IDLER ARM RIGHT |

24 - 48" Front Deck Assembly



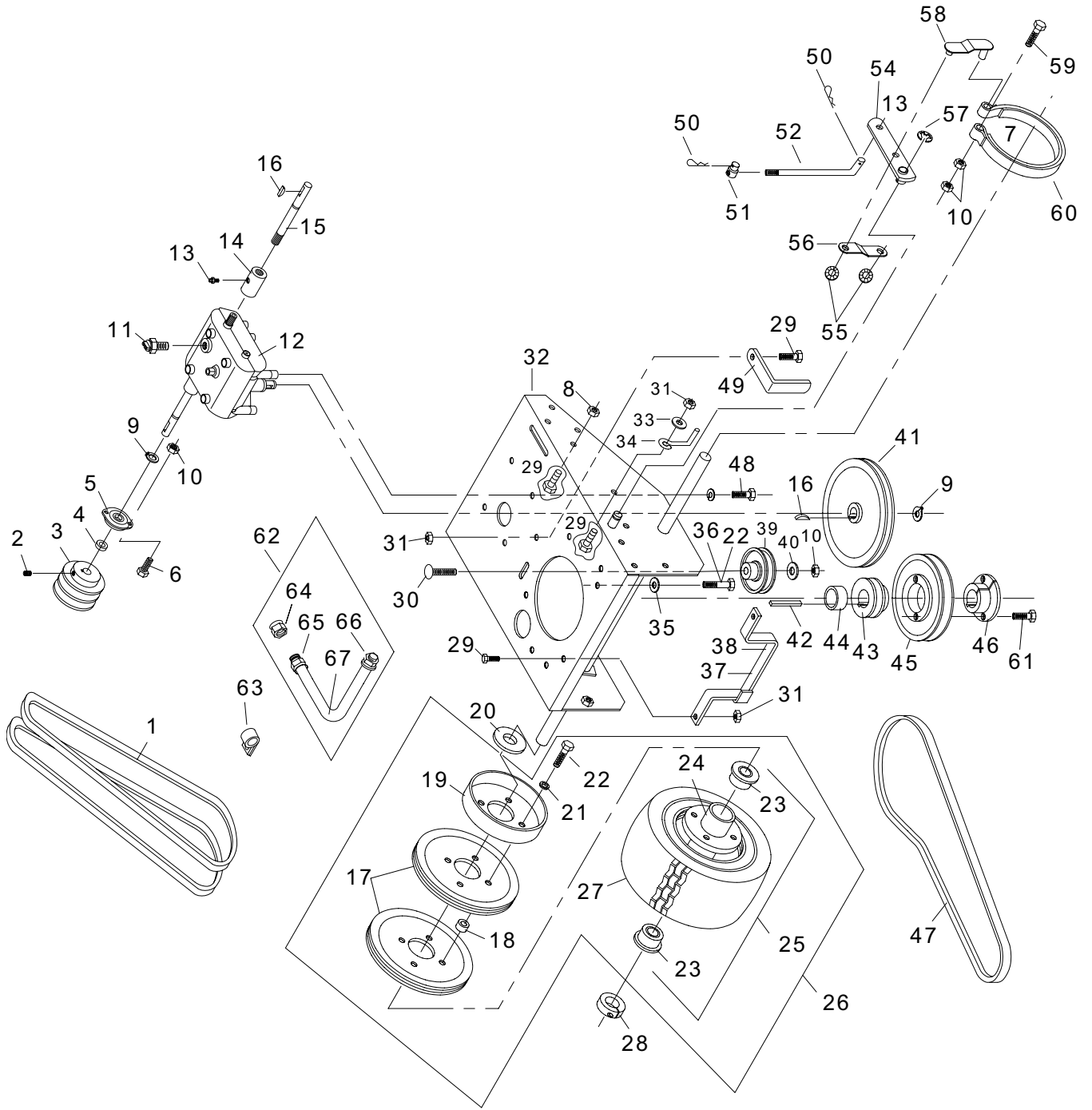
| ITEM # | PART NO. | QTY | DESCRIPTION |
|--------|----------|-----|------------------------------|
| 38 | E483003 | 1 | BELT TENSION ROD |
| 39 | E483017 | 1 | RIGHT HAND IDLER SPACER |
| 40 | E483019 | 1 | RIGHT HAND IDLER WASHER |
| 41 | E483031 | 1 | RIGHT HAND BLADE BELT |
| 42 | 960079 | 6 | 7/16" X 1" HEX BOLT |
| 43 | 960603 | 6 | 7/16" LOCK WASHER |
| 44 | 170126 | 1 | ASSY, DEF. 48 W/DECAL S/O |
| 45 | 960023 | 8 | 5/16" X 1" HEX BOLT |
| 46 | 960046 | 8 | 3/8" X 1" HEX BOLT |
| 47 | E363090 | 1 | BE.T SHIELD SUPPORT |
| 48 | 960024 | 12 | 5/16" X 1 1/4" HEX BOLT |
| 49 | E362018 | 1 | FRONT BELT GUIDE |
| 50 | 960062 | 3 | 3/8" X 5" HEX BOLT |
| 51 | 170127 | 1 | ASSY, DECK 48 W/DECALS S/O |
| 52 | 170151 | 1 | ASSY, CHANNEL 48 W/DECAL S/O |
| 53 | 960026 | 4 | 5/16" X 1 3/4" HEX BOLT |
| 54 | E483043 | 1 | SQUARE BUMPER |
| 55 | E483030 | 1 | BLADE DRIVE BELT |
| 56 | E363350 | 6 | SPINDLE BEARING |
| 57 | E363380 | 3 | BLADE SPINDLE HOUSING |
| 58 | E583113 | 3 | BEARING SPACER TUBE |
| 59 | E583112 | 3 | SPINDLE SHAFT |
| 60 | E363382 | 15 | BLADE SPACER |
| 61 | E363379 | 3 | CUTTER HOUSING ASSY |
| 62 | E483035 | 3 | 16" BLADE |
| 63 | E583108 | 3 | 5/8" DISC SPRING WASHER |
| 64 | E322019 | 1 | SPACER BRACKET |
| 65 | E322019 | 2 | 1/4" ZERK |
| 66 | E363249 | 1 | BELT SNUBBER |
| * | E491009 | 1 | KIT, OPTIONAL MULCH |

26 - Rear Deck Assembly



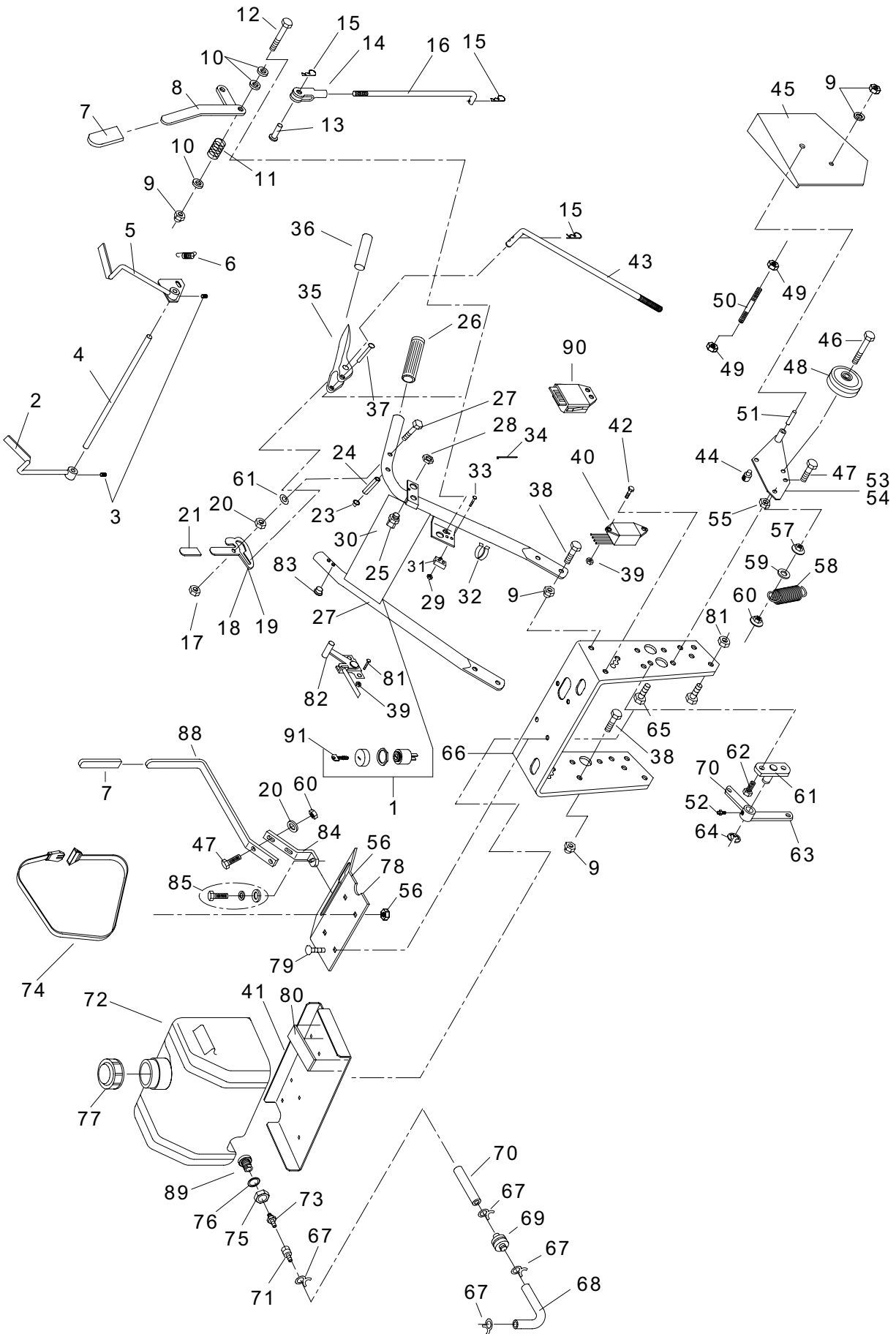
| ITEM # | PART NO. | QTY | DESCRIPTION |
|--------|----------|-----|---------------------------------|
| 1 | E363312 | 2 | MATCH SET DRIVE BELT |
| 2 | E103293 | 2 | 5/16"-18 X 3/8" SET SCREW |
| 3 | E363137 | 2 | 2-GROOVE SHEAVE |
| 4 | E363087 | 2 | TRANSMISSION SHAFT SPACER |
| 5 | E363292 | 2 | 2-BOLT FLANGE BEARING |
| 6 | 960046 | 4 | 3/8" X 1" HEX BOLT |
| 8 | 964019 | 2 | 5/16" WHIZLOCK NUT |
| 9 | E108508 | 3 | SNAP RING |
| 10 | 968087 | 5 | 3/8" NYLOC HEX NUT |
| 11 | E363207 | 1 | TRANSMISSION SWITCH |
| 12 | E363365 | 1 | TRANSMISSION 9-SPLINE |
| 13 | E111004 | 3 | 1/4"-28 GREASE ZERK |
| 14 | E362086 | 2 | COUPLER W/ZERK 9-SPLINE |
| 15 | E363367 | 2 | SHAFT EXTENSION 9-SPLINE |
| 16 | E107009 | 3 | #9 WOODRUFF KEY |
| 17 | E363191 | 4 | WHEEL PULLEY |
| 18 | E363113 | 8 | WHEEL PULLEY SPACER |
| 19 | E363190 | 2 | BRAKE DRUM |
| 20 | E363121 | 2 | WHEEL WASHER |
| 21 | 960601 | 8 | 5/16" MED WASHER |
| 23 | E363187 | 4 | WHEEL BEARING |
| 24A | E493016 | 2 | RIM W/VALVE STEM (36"-48") |
| 24B | E493015 | 2 | RIM W/VALVE STEM (32") |
| 26A | E493012 | 2 | DRIVE WHEEL COMPLETE (36"-48") |
| 26B | E493010 | 2 | DRIVE WHEEL COMPLETE (32" ONLY) |
| 27A | E363186 | 2 | TIRE 13 X 6.5 X 6 (36"-48") |
| 27B | E323025 | 2 | TIRE 13 X 5.00 X 6 (32" ONLY) |
| 28 | E363145 | 2 | 1" CLAMP COLLAR |
| 29 | 960023 | 3 | 5/16" X 1" HEX BOLT |
| 30 | E107501 | 1 | 3/8" X 2" CARRIAGE BOLT |
| 31 | 967115 | 3 | 5/16" NYLOC HEX NUT |
| 32A | 170124 | 1 | ASSY, BED 36/48 W/DECAL S/O |
| 32B | 170121 | 1 | ASSY, BED 32 W/DECAL S/O |
| 33 | 960701 | 2 | 5/16" STD FLAT WASHER |
| 34 | E363075 | 2 | ROUND BELT GUIDE |
| 35 | E363226 | 4 | DISC SPRING WASHER |
| 36 | E109018 | 4 | 8MM-1.25 x 25MM HEX BOLT |

28 - Rear Deck Assembly



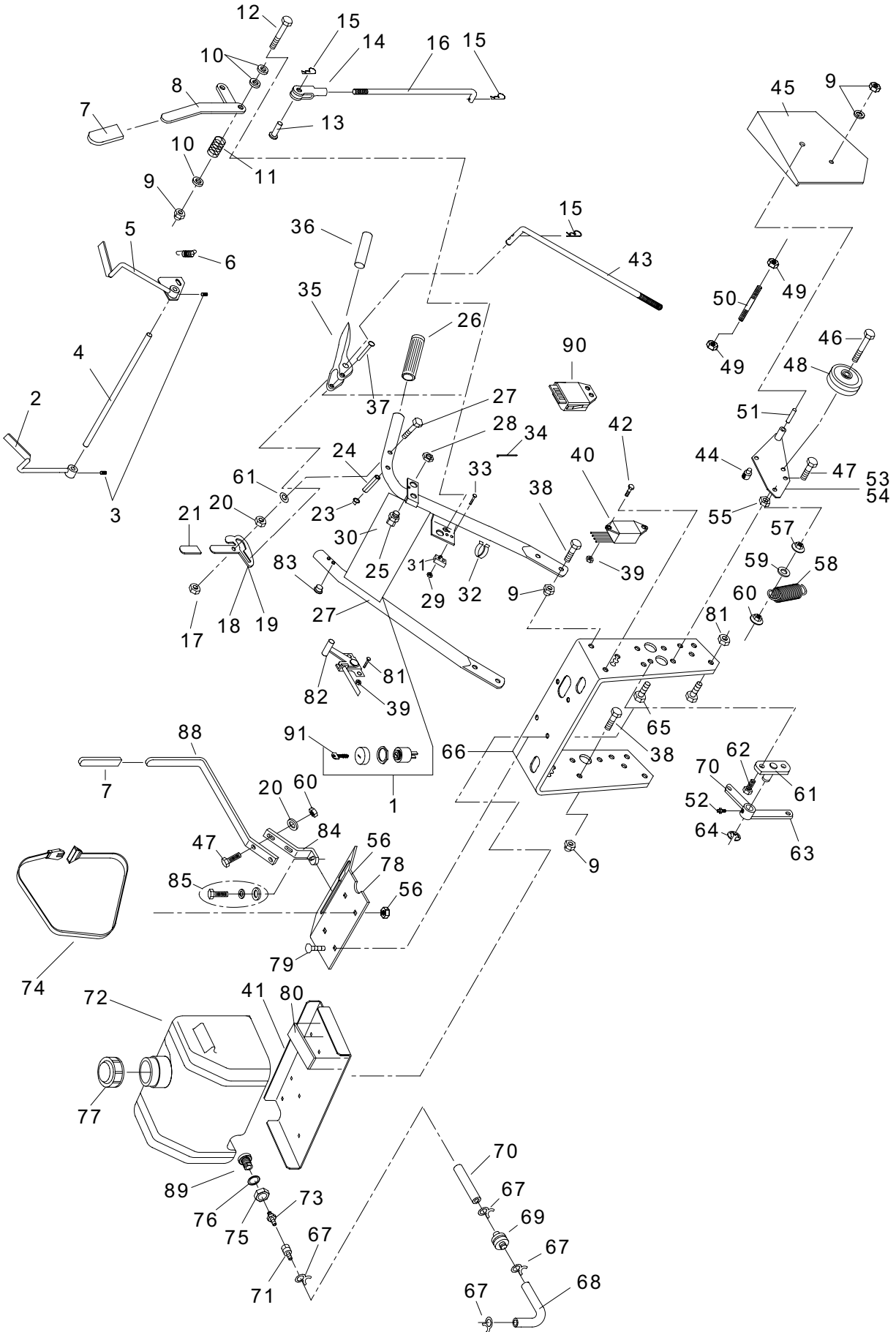
| ITEM # | PART NO. | QTY | DESCRIPTION |
|--------|----------|-----|-------------------------------|
| 37 | E362031 | 1 | BELT GUIDE BRKT (32" AND 36") |
| 38 | E482003 | 1 | BELT GUIDE BRKT (48") |
| 39 | E363169 | 1 | SMALL IDLER |
| 40 | 960702 | 1 | 3/8" STD FLAT WASHER |
| 41 | E363220 | 1 | TRANSMISSION SHEAVE |
| 42 | E107262 | 1 | KEY 1/4" SQ. X 2 1/2" |
| 43 | E363119 | 1 | PULLEY(TO TRANSMISSION) |
| 44 | E363124 | 1 | SPACER |
| 45 | E363216 | 1 | TAPER LOCK SHEAVE |
| 46 | E363215 | 1 | 1" TAPER LOCK HUB |
| 47 | E363212 | 1 | TRANSMISSION BELT |
| 48 | 960022 | 4 | 5/16" X 3/4" HEX BOLT |
| 49 | E523320 | 1 | FLAT BELT GUIDE |
| 50 | E363165 | 4 | #2 HAIR PIN COTTER |
| 51 | E363029 | 4 | .312 ROD SWIVEL |
| 52 | E363142 | 1 | BRAKE ROD |
| 54A | E362041 | 1 | BRAKE ARM RIGHT |
| 54B | E362042 | 1 | BRAKE ARM LEFT |
| 55 | E363177 | 4 | 3/8" PUSH NUT |
| 56 | E363135 | 2 | BRAKE CONNECTOR |
| 57 | E108500 | 2 | 5/8" E-RING |
| 58 | E362026 | 2 | BRAKE CONNECTOR |
| 59 | 960050 | 2 | 3/8" X 2" HEX BOLT |
| 60 | E363176 | 2 | BRAKE BAND |
| 61 | 960001 | 8 | 1/4" X 3/4" HEX BOLT |

30 - Handle Assembly



| ITEM # | PART NO. | QTY | DESCRIPTION |
|--------|----------|-----|---------------------------|
| 1 | E603060 | 1 | RUN STOP SWITCH |
| 2 | E362051 | 1 | RIGHT HAND O.P.C. LEVER |
| 3 | E103292 | 2 | 1/4"-28 X 1/4" SET SCREW |
| 4 | E363157 | 1 | CONNECTING ROD |
| 5 | E362053 | 1 | LEFT HAND O.P.C. LEVER |
| 6 | E363155 | 1 | O.P.C. SPRING |
| 7 | E363022 | 2 | ADJUSTMENT LEVER GRIP |
| 8 | E362058 | 1 | ENGAGEMENT LEVER W/GRIP |
| 9 | 968087 | 1 | 3/8" NYLOC HEX NUT |
| 10 | 960702 | 3 | 3/8" STD FLAT WASHER |
| 11 | E363024 | 1 | COMPRESSION SPRING |
| 12 | 960050 | 1 | 3/8" X 2" HEX BOLT |
| 13 | E363144 | 1 | CLEVIS PIN-SMALL YOKE |
| 14 | E363152 | 1 | YOKE-SMALL |
| 15 | E363165 | 3 | HAIRPIN COTTER |
| 16 | E363150 | 1 | UPPER CRANK LINKAGE |
| 17 | E103011 | 2 | 1/4" HEX TORQUE NUT |
| 18 | E363284 | 1 | LEFT THUMB LATCH PKG. |
| 19 | E363282 | 1 | RIGHT THUMB LATCH PKG. |
| 20 | 960701 | 2 | 5/16" FLAT WASHER |
| 21 | E363069 | 2 | LATCH GRIP |
| 23 | E363219 | 2 | 3/16" PUSH NUT |
| 24 | E106340 | 2 | 5/16" X 1" ROLL PIN |
| 25 | E363208 | 1 | O.P.C. SWITCH |
| 26 | E363218 | 2 | HANDLE GRIP |
| 27 | 960006 | 2 | 1/4" X 2" HEX BOLT |
| 28 | E363234 | 1 | NUT-O.P.C. SWITCH |
| 29 | E104520 | 2 | #5-40 HEX NUT |
| 30 | 170129 | 1 | ASSY, HANDLE W/DECALS S/O |
| 31 | E363164 | 1 | BLADE SWITCH |
| 32 | E363221 | 2 | CABLE CLIP |
| 33 | E101252 | 2 | #5-40 X 1" MACHINE SCREW |
| 34 | E363222 | 7 | PLASTIC TIE |
| 35 | E362059 | 2 | DRIVE LEVER W/GRIP |
| 36 | E363067 | 2 | DRIVE LEVER GRIP |
| 37 | E363073 | 2 | TRACTION LEVER PIN |
| 38 | 960046 | 8 | 3/8" X 1" HEX BOLT |

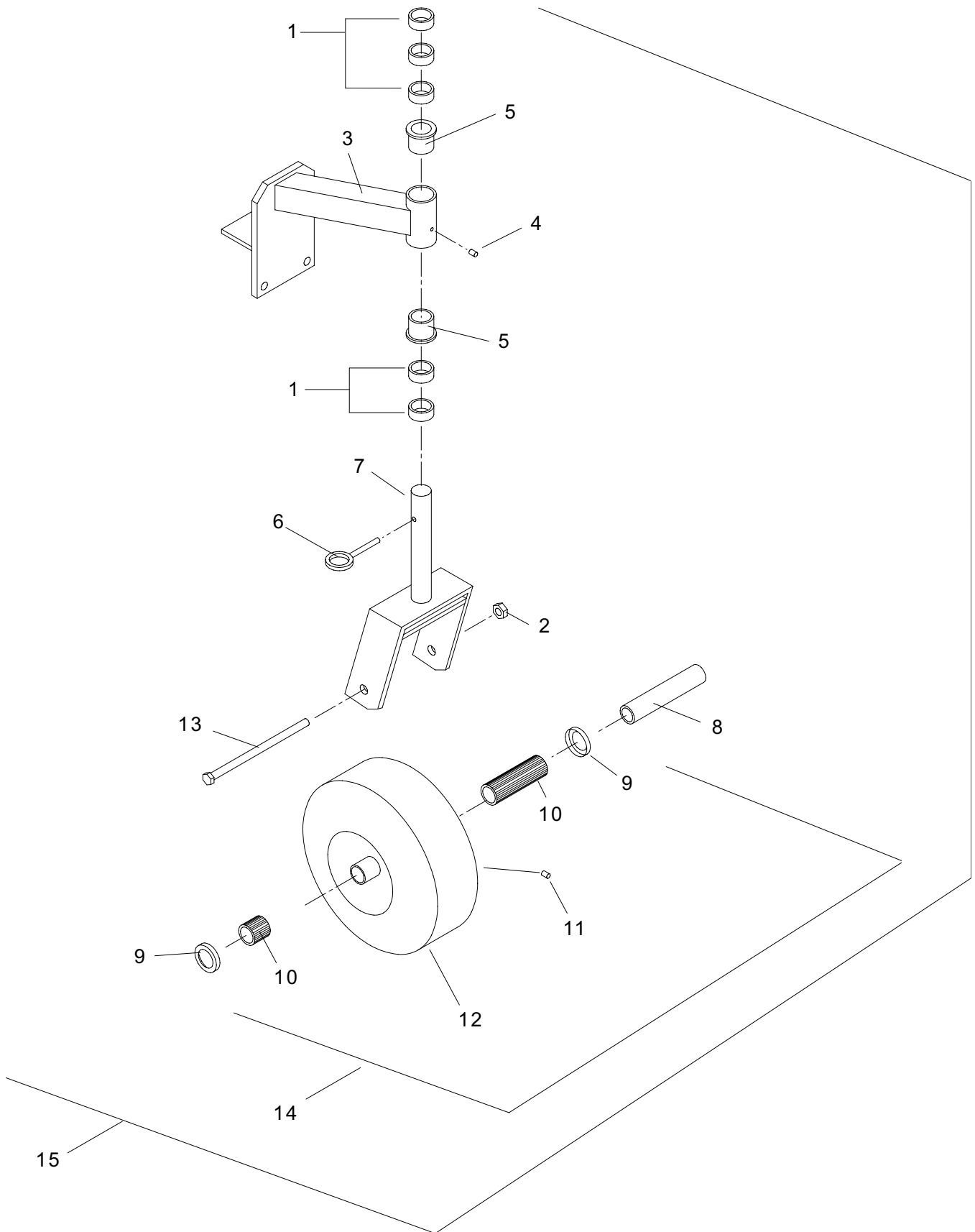
32 - Handle Assembly



| ITEM # | PART NO. | QTY | DESCRIPTION |
|--------|----------|-----|-----------------------------|
| 39 | 964013 | 1 | #10-24 NYLOC HEX NUT |
| 40 | E363371 | 1 | WIRE HARNESS |
| 41 | E363360 | 1 | TANK SADDLE |
| 42 | 967222 | 1 | #10-24 X 5/8" PANHEAD SCREW |
| 43 | E363198 | 2 | DRIVE ROD |
| 44 | E363029 | 4 | .312 SWIVEL |
| 45A | 170143 | 1 | ASSY, FENDER LH W/DECAL S/O |
| 45B | 170142 | 1 | ASSY, FENDER RH W/DECAL S/O |
| 46 | 960118 | 2 | 1/2" X 2 1/2" HEX BOLT |
| 47 | 960024 | 4 | 5/16" X 1 1/4" HEX BOLT |
| 48 | E363168 | 2 | DRIVE IDLER |
| 49 | 964016 | 4 | 3/8" WHIZLOCK NUT |
| 50 | E363093 | 2 | SAFETY SHIELD SUPPORT |
| 51 | E363105 | 2 | IDLER BUSHING |
| 52 | E111004 | 2 | 1/4" -28 GREASE ZERK |
| 53 | E362035 | 1 | LEFT IDLER ARM (SHOWN) |
| 54 | E362037 | 1 | RIGHT IDLER ARM |
| 55 | E104259 | 2 | 1/2" NYLOC HEX NUT |
| 56 | 964048 | 6 | 1/4" NYLOC HEX NUT |
| 57 | 964019 | 2 | 5/16" WHIZLOCK NUT |
| 58 | E363117 | 2 | TENSION SPRING |
| 59 | E105257 | 4 | 5/16" S.A.E. FLAT WASHER |
| 60 | 967115 | 2 | 5/16" NYLOC HEX NUT |
| 61 | E362033 | 1 | BELL CRANK MOUNT ASSY |
| 62 | 960002 | 2 | 1/4" X 1" HEX BOLT |
| 63 | E362040 | 1 | BELL CRANK W/ZERK |
| 64 | E108500 | 1 | 5/8" E-RING |
| 65 | 960058 | 2 | 3/8" X 4" HEX BOLT |
| 66 | E363148 | 1 | LOWER HANDLE |
| 67 | E363098 | 4 | GAS LINE CLAMP |
| 68 | E363228 | 1 | SHORT FUEL LINE HOSE |
| 69 | E363032 | 1 | FUEL FILTER |
| 70A | E603032 | 1 | FUEL LINE |
| 70B | E363099 | 1 | FUEL LINE (V-TWINS) |
| 71 | E363354 | 1 | FUEL COUPLER-FEMALE |
| 72 | E362087 | 1 | MODULAR FUEL TANK |
| 73 | E363353 | 1 | FUEL COUPLER-MALE |

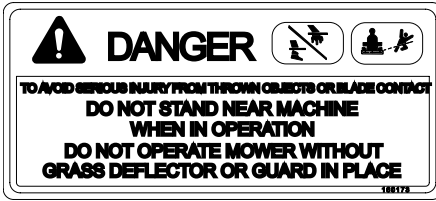
| ITEM # | PART NO. | QTY | DESCRIPTION |
|--------|----------|-----|--------------------------------|
| 74 | E363368 | 2 | FUEL TANK BELT |
| 75 | E104761 | 1 | LEFT HAND NUT |
| 76 | E363370 | 1 | O-RING |
| 77 | E583194 | 1 | FUEL CAP |
| 78 | 170128 | 1 | ASSY, SHIFT GUIDE W/DECAL S/O |
| 79 | 963095 | 4 | 1/4" X 3/4" CARRIAGE BOLT |
| 80 | E363201 | 2 | FUEL TANK PAD |
| 81 | E101295 | 3 | #10 X 1 1/2" SLTD. MACH. SCREW |
| 82 | E363352 | 1 | THROTTLE CONTROL |
| 83 | E363159 | 2 | NYLON BUSHING |
| 84 | E363128 | 1 | SHIFTER BRACKET |
| 85A | E104251 | 1 | 3/8"-24 NYLOC HEX NUT |
| 85B | 960702 | 1 | 3/8" STD FLAT WASHER |
| 85C | E363226 | 1 | SPRING DISC WASHER |
| 88 | E362060 | 1 | SHIFTER LEVER W/GRIP |
| 89 | E363355 | 1 | BULKHEAD FITTING |
| 90 | E363372 | 1 | SAFETY MODULE |
| 91 | 105684 | 1 | KEY IGNITION S/O |
| 92 | E492025 | 1 | ASSY, FUEL TANK |

36 - Caster Assembly



| ITEM # | PART NO. | QTY | DESCRIPTION |
|--------|----------|-----|---------------------------|
| 1 | E363006 | 10 | CASTER SPACER |
| 2 | E104259 | 2 | 1/2"-13 NYLOC NUT |
| 3 | E492024 | 2 | CASTER SUPPORT W/BUSHINGS |
| 4 | E111001 | 2 | GREASE ZERK |
| 5 | E363007 | 4 | FLANGE BEARING |
| 6 | E109020 | 1 | QUICK PIN |
| 7 | E492015 | 2 | YOKE STRUT |
| 8 | E363307 | 2 | AXLE TUBE |
| 9 | E423201 | 4 | END CAP |
| 10 | E423200 | 2 | ROLLER BEARING |
| 11 | E111005 | 2 | GREASE ZERK |
| 12 | E363260 | 2 | SMOOTH TIRE AND TUBE |
| 13 | 960130 | 2 | 1/2"-13 X 6" BOLT |
| 14 | E493011 | 2 | WHEEL COMPLETE |
| 15 | E492023 | 2 | CASTER ASSY COMPLETE |

38 - Belt Drive Walk Behind Decals



1



2

32 36

3

4

Wasp

5



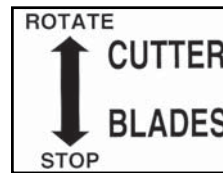
6



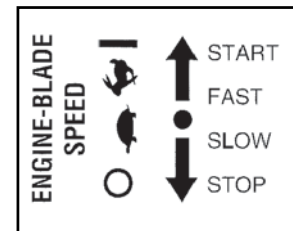
7

48

8



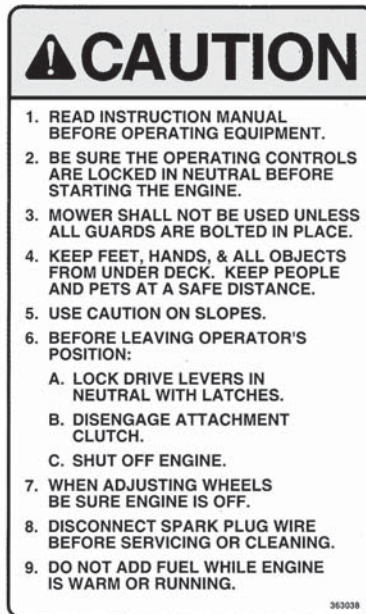
9



10



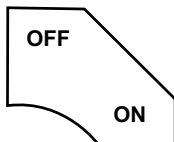
11



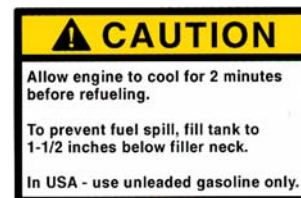
12



13



14



15



16



17

| ITEM # | PART NO. | QTY | DESCRIPTION |
|--------|----------|-----|-----------------------|
| 1 | 160173 | 1 | Decal, Danger Chute |
| 2 | 160169 | 1 | Decal, Shield Missing |
| 3 | 170134 | 1 | Decal, 32 |
| 4 | 170138 | 1 | Decal, 36 |
| 5 | 170145 | 2 | DECAL, WASP |
| 6 | 170146 | 1 | Decal, EverRide |
| 7 | 181000 | 1 | Decal, EverRide 11" |
| 8 | 191369 | 1 | Decal, 48 |
| 9 | E363037 | 1 | Cutter Blade Label |
| 10 | E363039 | 1 | Throttle Decal |
| 11 | E363289 | 2 | Neutral Park Decal |
| 12 | E363038 | 1 | Caution/Instr. Label |
| 13 | E363023 | 2 | Decal, Deck Danger |
| 14 | E523018 | 1 | Key Switch Decal |
| 15 | E363364 | 1 | Caution, Fuel Tank |
| 16 | E363241 | 1 | Gear Shift Label |
| 17 | E363233 | 1 | Shifting Label |

40 - PARTS LIST

| PART NO. | PAGE | ITEM | PART NO. | PAGE | ITEM | PART NO. | PAGE | ITEM |
|----------|------|------|----------|------|------|----------|------|------|
| 105684 | 33 | 91 | 960024 | 23 | 48 | 960701 | 25 | 33 |
| 160169 | 37 | 2 | 960024 | 31 | 47 | 960701 | 29 | 20 |
| 160173 | 37 | 1 | 960026 | 15 | 47 | 960702 | 13 | 2 |
| 170120 | 15 | 44 | 960026 | 19 | 47 | 960702 | 17 | 2 |
| 170121 | 25 | 32B | 960026 | 23 | 53 | 960702 | 21 | 2 |
| 170122 | 15 | 49 | 960046 | 15 | 48 | 960702 | 27 | 40 |
| 170122 | 19 | 49 | 960046 | 19 | 48 | 960702 | 29 | 10 |
| 170124 | 25 | 32A | 960046 | 23 | 46 | 960702 | 33 | 85B |
| 170125 | 19 | 44 | 960046 | 25 | 6 | 963095 | 33 | 79 |
| 170126 | 23 | 44 | 960046 | 29 | 38 | 964013 | 31 | 39 |
| 170127 | 23 | 51 | 960050 | 27 | 59 | 964016 | 13 | 20 |
| 170128 | 33 | 78 | 960050 | 29 | 12 | 964016 | 17 | 20 |
| 170129 | 29 | 30 | 960052 | 13 | 19 | 964016 | 21 | 20 |
| 170131 | 13 | 3 | 960052 | 17 | 19 | 964016 | 31 | 49 |
| 170134 | 37 | 3 | 960052 | 21 | 19 | 964019 | 13 | 13 |
| 170135 | 15 | 58 | 960058 | 31 | 65 | 964019 | 17 | 13 |
| 170138 | 37 | 4 | 960062 | 13 | 39 | 964019 | 21 | 13 |
| 170139 | 17 | 3 | 960062 | 17 | 39 | 964019 | 25 | 8 |
| 170141 | 19 | 58 | 960062 | 23 | 50 | 964019 | 31 | 57 |
| 170142 | 31 | 45B | 960079 | 13 | 40 | 964048 | 31 | 56 |
| 170143 | 31 | 45A | 960079 | 17 | 40 | 967115 | 13 | 28 |
| 170144 | 21 | 3 | 960079 | 23 | 42 | 967115 | 17 | 28 |
| 170145 | 37 | 5 | 960118 | 31 | 46 | 967115 | 21 | 26 |
| 170146 | 37 | 6 | 960130 | 35 | 13 | 967115 | 25 | 31 |
| 170151 | 23 | 52 | 960155 | 13 | 18A | 967115 | 31 | 60 |
| 181000 | 37 | 7 | 960155 | 17 | 18A | 967222 | 31 | 42 |
| 191369 | 37 | 8 | 960155 | 21 | 18A | 968087 | 13 | 36 |
| 960001 | 27 | 61 | 960158 | 13 | 18B | 968087 | 17 | 36 |
| 960002 | 31 | 62 | 960158 | 17 | 18B | 968087 | 21 | 35 |
| 960006 | 29 | 27 | 960158 | 21 | 18B | 968087 | 25 | 10 |
| 960022 | 27 | 48 | 960601 | 25 | 21 | 968087 | 29 | 9 |
| 960023 | 15 | 43 | 960603 | 13 | 41 | E100297 | 21 | 22 |
| 960023 | 19 | 43 | 960603 | 19 | 41 | E101252 | 29 | 33 |
| 960023 | 23 | 45 | 960603 | 23 | 43 | E101295 | 33 | 81 |
| 960023 | 25 | 29 | 960606 | 15 | 61 | E103011 | 29 | 17 |
| 960024 | 13 | 42 | 960606 | 19 | 61 | E103027 | 13 | 1 |
| 960024 | 19 | 42 | 960606 | 21 | 29 | E103027 | 17 | 1 |

| PART NO. | PAGE | ITEM | PART NO. | PAGE | ITEM | PART NO. | PAGE | ITEM |
|----------|------|------|----------|------|------|----------|------|------|
| E103027 | 21 | 1 | E111005 | 35 | 11 | E363029 | 27 | 51 |
| E103292 | 29 | 3 | E322019 | 15 | 59 | E363029 | 31 | 44 |
| E103293 | 25 | 2 | E322019 | 19 | 59 | E363032 | 31 | 69 |
| E104251 | 33 | 85A | E322019 | 23 | 64 | E363037 | 37 | 9 |
| E104259 | 31 | 55 | E322019 | 23 | 65 | E363038 | 37 | 12 |
| E104259 | 35 | 2 | E323002 | 13 | 8 | E363039 | 37 | 10 |
| E104511 | 15 | 60 | E323003 | 13 | 30 | E363067 | 29 | 36 |
| E104511 | 19 | 60 | E323025 | 25 | 27B | E363069 | 29 | 21 |
| E104511 | 21 | 28 | E323029 | 15 | 46 | E363073 | 29 | 37 |
| E104520 | 29 | 29 | E362018 | 17 | 38 | E363075 | 25 | 34 |
| E104761 | 33 | 75 | E362018 | 23 | 49 | E363080 | 13 | 12 |
| E105257 | 31 | 59 | E362024 | 13 | 29 | E363080 | 17 | 12 |
| E105269 | 15 | 62 | E362024 | 17 | 29 | E363080 | 21 | 12 |
| E105269 | 19 | 62 | E362024 | 21 | 27 | E363082 | 13 | 16 |
| E105269 | 21 | 30 | E362026 | 27 | 58 | E363082 | 17 | 16 |
| E106340 | 29 | 24 | E362031 | 27 | 37 | E363082 | 21 | 16 |
| E107009 | 25 | 16 | E362033 | 31 | 61 | E363085 | 13 | 11 |
| E107262 | 27 | 42 | E362035 | 31 | 53 | E363085 | 17 | 11 |
| E107501 | 25 | 30 | E362037 | 31 | 54 | E363085 | 21 | 11 |
| E108500 | 27 | 57 | E362040 | 31 | 63 | E363087 | 25 | 4 |
| E108500 | 31 | 64 | E362041 | 27 | 54A | E363089 | 13 | 25 |
| E108508 | 25 | 9 | E362042 | 27 | 54B | E363089 | 17 | 25 |
| E108509 | 13 | 24 | E362051 | 29 | 2 | E363089 | 21 | 24 |
| E108509 | 17 | 24 | E362053 | 29 | 5 | E363090 | 13 | 37 |
| E108509 | 21 | 23 | E362058 | 29 | 8 | E363090 | 17 | 37 |
| E109014 | 13 | 9 | E362059 | 29 | 35 | E363090 | 23 | 47 |
| E109014 | 15 | 45 | E362060 | 33 | 88 | E363093 | 31 | 50 |
| E109014 | 17 | 9 | E362071 | 13 | 26 | E363097 | 13 | 15 |
| E109014 | 19 | 45 | E362071 | 17 | 26 | E363097 | 17 | 15 |
| E109014 | 21 | 9 | E362071 | 21 | 25 | E363097 | 21 | 15 |
| E109018 | 25 | 36 | E362086 | 25 | 14 | E363098 | 31 | 67 |
| E109020 | 35 | 6 | E362087 | 31 | 72 | E363099 | 31 | 70B |
| E111001 | 35 | 4 | E363006 | 35 | 1 | E363105 | 31 | 51 |
| E111004 | 13 | 27 | E363007 | 35 | 5 | E363113 | 25 | 18 |
| E111004 | 17 | 27 | E363022 | 29 | 7 | E363117 | 31 | 58 |
| E111004 | 25 | 13 | E363023 | 37 | 13 | E363119 | 27 | 43 |
| E111004 | 31 | 52 | E363024 | 29 | 11 | E363121 | 25 | 20 |

42 - PARTS LIST

| PART NO. | PAGE | ITEM |
|----------|------|------|
|----------|------|------|

| | | |
|---------|----|-----|
| E363124 | 27 | 44 |
| E363128 | 33 | 84 |
| E363135 | 27 | 56 |
| E363137 | 25 | 3 |
| E363142 | 27 | 52 |
| E363144 | 29 | 13 |
| E363145 | 25 | 28 |
| E363148 | 31 | 66 |
| E363150 | 29 | 16 |
| E363152 | 29 | 14 |
| E363155 | 29 | 6 |
| E363157 | 29 | 4 |
| E363159 | 33 | 83 |
| E363164 | 29 | 31 |
| E363165 | 13 | 5 |
| E363165 | 17 | 5 |
| E363165 | 21 | 5 |
| E363165 | 27 | 50 |
| E363165 | 29 | 15 |
| E363168 | 31 | 48 |
| E363169 | 27 | 39 |
| E363172 | 13 | 14 |
| E363172 | 17 | 14 |
| E363172 | 21 | 14 |
| E363174 | 13 | 17 |
| E363174 | 17 | 17 |
| E363174 | 21 | 17 |
| E363176 | 27 | 60 |
| E363177 | 27 | 55 |
| E363186 | 25 | 27A |
| E363187 | 25 | 23 |
| E363190 | 25 | 19 |
| E363191 | 25 | 17 |
| E363192 | 13 | 6 |
| E363192 | 17 | 6 |
| E363192 | 21 | 6 |
| E363194 | 17 | 8 |

| PART NO. | PAGE | ITEM |
|----------|------|------|
|----------|------|------|

| | | |
|---------|----|-----|
| E363196 | 13 | 7 |
| E363196 | 17 | 7 |
| E363196 | 21 | 7 |
| E363198 | 31 | 43 |
| E363201 | 33 | 80 |
| E363207 | 25 | 11 |
| E363208 | 29 | 25 |
| E363210 | 17 | 30 |
| E363212 | 27 | 47 |
| E363215 | 27 | 46 |
| E363216 | 27 | 45 |
| E363218 | 29 | 26 |
| E363219 | 29 | 23 |
| E363220 | 27 | 41 |
| E363221 | 29 | 32 |
| E363222 | 29 | 34 |
| E363226 | 25 | 35 |
| E363226 | 33 | 85C |
| E363228 | 31 | 68 |
| E363233 | 37 | 17 |
| E363234 | 29 | 28 |
| E363240 | 13 | 10 |
| E363240 | 17 | 10 |
| E363240 | 21 | 10 |
| E363241 | 37 | 16 |
| E363249 | 13 | 22 |
| E363249 | 17 | 22 |
| E363249 | 23 | 66 |
| E363260 | 35 | 12 |
| E363264 | 13 | 21 |
| E363264 | 17 | 21 |
| E363264 | 21 | 21 |
| E363282 | 29 | 19 |
| E363284 | 29 | 18 |
| E363289 | 37 | 11 |
| E363291 | 17 | 34 |
| E363292 | 25 | 5 |

| PART NO. | PAGE | ITEM |
|----------|------|------|
|----------|------|------|

| | | |
|---------|----|----|
| E363304 | 19 | 46 |
| E363307 | 35 | 8 |
| E363312 | 25 | 1 |
| E363350 | 15 | 50 |
| E363350 | 19 | 50 |
| E363350 | 23 | 56 |
| E363352 | 33 | 82 |
| E363353 | 31 | 73 |
| E363355 | 33 | 89 |
| E363360 | 31 | 41 |
| E363364 | 31 | 71 |
| E363364 | 37 | 15 |
| E363365 | 25 | 12 |
| E363367 | 25 | 15 |
| E363368 | 33 | 74 |
| E363370 | 33 | 76 |
| E363371 | 31 | 40 |
| E363372 | 33 | 90 |
| E363377 | 21 | 34 |
| E363378 | 13 | 35 |
| E363378 | 17 | 35 |
| E363378 | 21 | 33 |
| E363379 | 15 | 56 |
| E363379 | 19 | 56 |
| E363379 | 23 | 61 |
| E363380 | 15 | 51 |
| E363380 | 19 | 51 |
| E363380 | 23 | 57 |
| E363382 | 15 | 57 |
| E363382 | 19 | 57 |
| E363382 | 23 | 60 |
| E423200 | 35 | 10 |
| E423201 | 35 | 9 |
| E482003 | 27 | 38 |
| E482005 | 21 | 37 |
| E483003 | 23 | 38 |
| E483017 | 23 | 39 |

| PART NO. | PAGE | ITEM |
|----------|------|------|
| E483019 | 23 | 40 |
| E483025 | 21 | 36 |
| E483028 | 21 | 8 |
| E483030 | 23 | 55 |
| E483031 | 23 | 41 |
| E483035 | 13 | 34 |
| E483035 | 23 | 62 |
| E483043 | 23 | 54 |
| E491007 | 15 | * |
| E491008 | 19 | * |
| E491009 | 23 | * |
| E492015 | 35 | 7 |
| E492023 | 35 | 15 |
| E492024 | 35 | 3 |
| E492025 | 33 | 92 |
| E493010 | 25 | 26B |
| E493011 | 35 | 14 |
| E493012 | 25 | 26A |
| E493015 | 25 | 24B |
| E493016 | 25 | 24A |
| E523018 | 37 | 14 |
| E523320 | 27 | 49 |
| E583107 | 21 | 32 |
| E583108 | 15 | 63 |
| E583108 | 19 | 63 |
| E583108 | 23 | 63 |
| E583110 | 21 | 31 |
| E583112 | 15 | 53 |
| E583112 | 19 | 53 |
| E583112 | 23 | 59 |
| E583113 | 15 | 52 |
| E583113 | 19 | 52 |
| E583113 | 23 | 58 |
| E583194 | 33 | 77 |
| E603032 | 31 | 70A |
| E603060 | 29 | 1 |

